

WAAS CH 99326 W27A	APP CRS 272°	Rwy ldg TDZE 773 Apt Elev 774
--	------------------------	---

RNAV (GPS) RWY 27

GLADWIN ZETTEL MEML (GDW)

RNP APCH - GPS.	<div><div><div><div></div><div>NA</div></div><div>Circling NA to Rwy 15 and 33. Rwy 27 helicopter visibility reduction below 1 SM NA. Procedure NA at night. Use Mount Pleasant altimeter setting; when not received, use Midland altimeter setting and increase all MDA 20 feet; increase LP and LNAV Cats C/D visibility 1⁄8 SM.</div></div></div> <div><div>MISSED APPROACH:</div><div>Climbing left turn to 2600 direct WHIPP and hold.</div></div>
-----------------	---

GREAT LAKES APP CON ★ 126.45 235.625	UNICOM 122.8 (CTAF) 0
--	---------------------------------

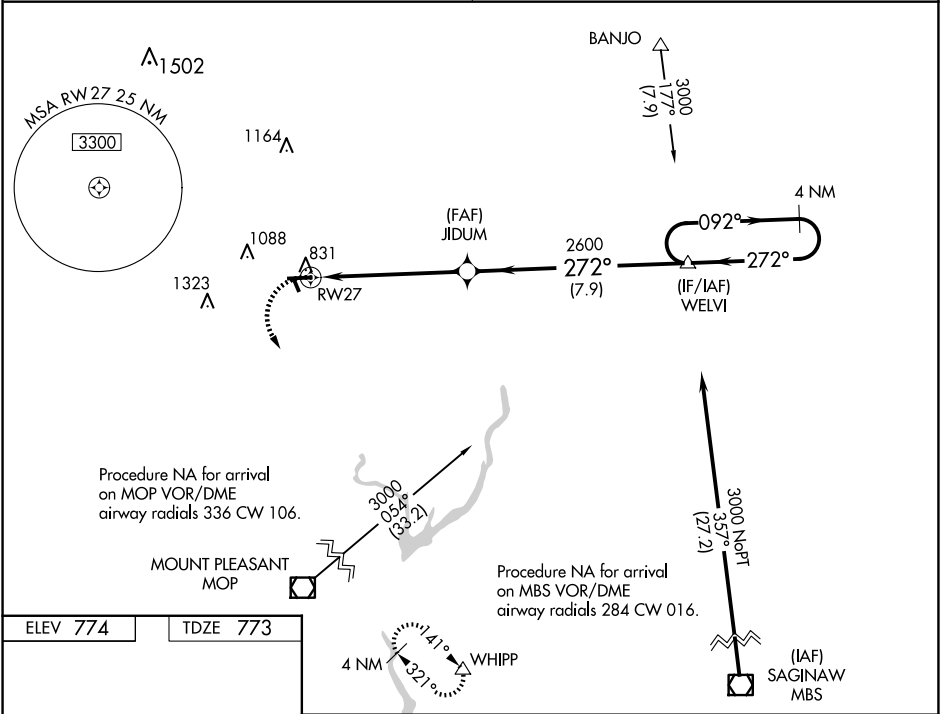


Diagram of RWY 27 showing dimensions: 4699 X 75, 2880 X 150, 0.3 NM LP, 0.3 NM LP, 272°.

2600

WHIPP

△

JIDUM

2600

3.00° TCH 40

272°

092°

3000

272°

4 NM Holding Pattern

WELVI

5.6 NM

7.9 NM

CATEGORY	A	B	C	D
LP MDA	1280-1	507 (600-1)	1280-1 ^{3⁄8}	507 (600-1 ^{3⁄8})
LNAV MDA	1280-1	507 (600-1)	1280-1 ^{3⁄8}	507 (600-1 ^{3⁄8})
CIRCLING	1420-1 646 (700-1)	1500-1 726 (800-1)	1520-2 ^{1⁄4} 746 (800-2 ^{1⁄4})	1700-3 926 (1000-3)

MIRL Rwy 9-27

REIL Rws 9 and 27