

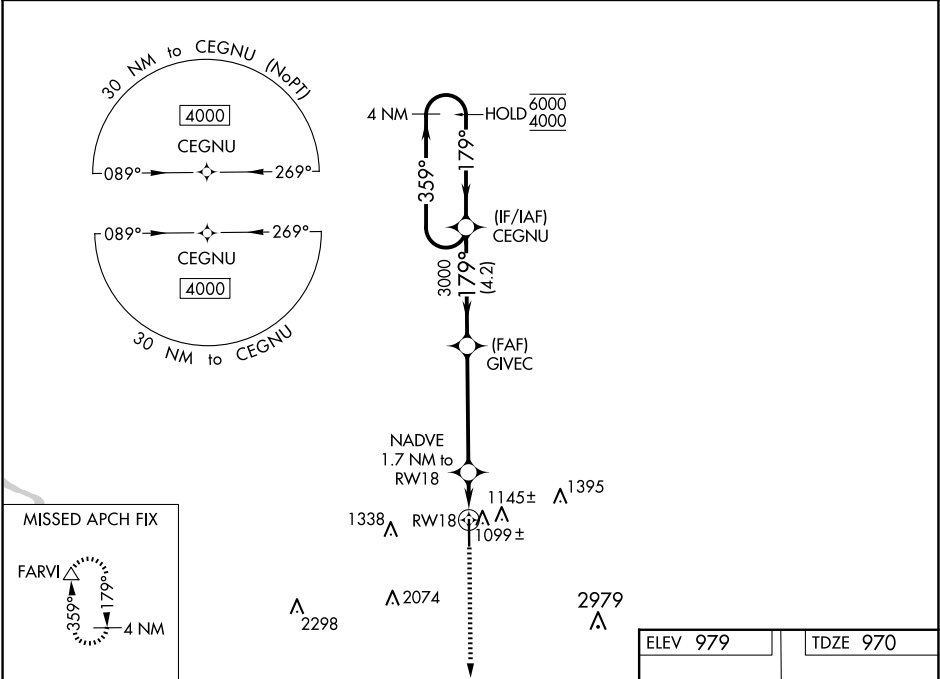
RNP APCH.

▼
▲

For uncompensated Baro-VNAV systems, LNAV/VNAV NA
below -16°C or above 54°C.

MISSED APPROACH: Climb to
4000 direct FARVI and hold,
continue climb-in-hold to 4000.

AWOS-3 120.825	WATERLOO APP CON ★ 118.9 251.15	UNICOM 122.8 (CTAF) 0
-------------------	------------------------------------	--------------------------



4 NM Holding Pattern		CEGNU	GIVEC	4000 FARVI
6000 ← 359°		179° →	3000	NADVE 1.7 NM to RW18
GP 3.00° TCH 40		4.2 NM	4.6 NM	0.6 NM
CATEGORY	A	B	C	D
LPV DA	1220-¾		250 (300-¾)	
LNAV/VNAV DA	1280-⅞		310 (400-⅞)	
LNAV MDA	1360-1 390 (400-1)		1360-1½ 390 (400-1½)	
CIRCLING	1500-1 521 (600-1)		1700-2 721 (800-2) 2440-3 1461 (1500-3)	

ELEV 979

TDZE 970

179° →

81

5500 X 100

36

MIRL Rwy 18-36 0

REIL Rwy 18 and 36 0