

APP CRS	Rwy Ldg	5001
088°	TDZE	1389
	Apt Elev	1395

RNAV (GPS) RWY 9

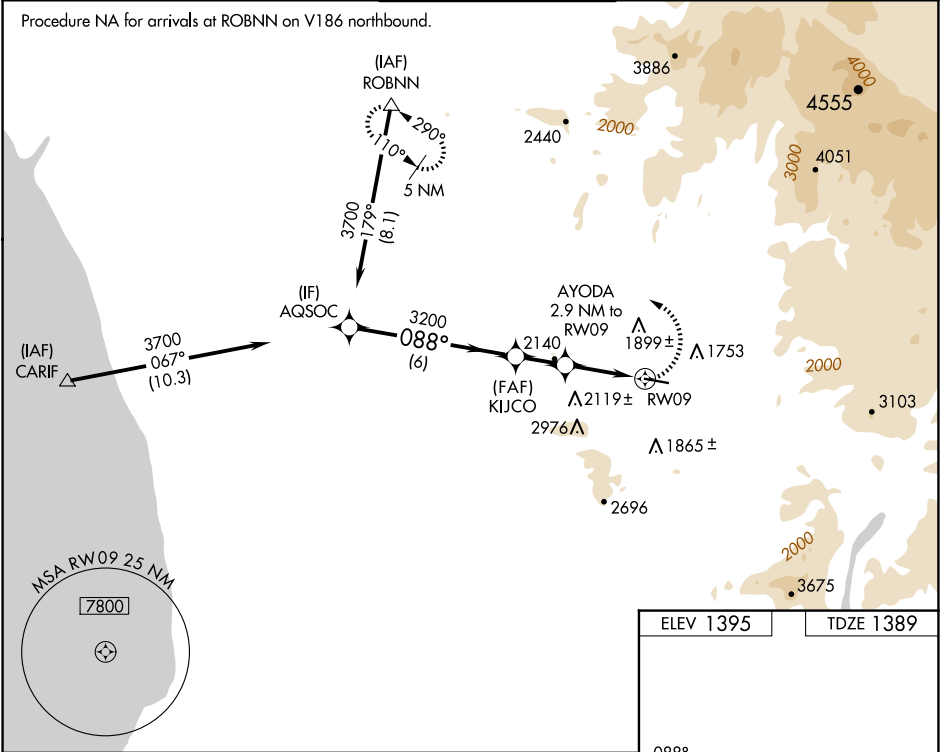
RAMONA (RNM)

⚠

Circling NA north of Rwy 9-27. Circling NA for Cat C when using Gillespie Fld altimeter setting. DME/DME RNP -0.3 NA. LNAV minima NA when using Gillespie Fld altimeter setting. When local altimeter setting not received, use Gillespie Fld altimeter setting and increase all Circling MDA 180 feet and increase Circling visibility Cat B ¼ SM. Helicopter visibility reduction below ¾ SM NA.

MISSED APPROACH: Climbing left turn to 5000 direct ROBNN and hold.

ATIS 132.025	SOCAL APP CON 132.2 269.1	RAMONA TOWER ★ 119,875 (CTAF) 0	GND CON 121.65	UNICOM 122.95
-----------------	------------------------------	------------------------------------	-------------------	------------------



\* 2700 when using Gillespie Fld altimeter setting.

5000

ROBNN

AQSOC

KIJC

AYODA

RW09

3700

088°

3200

3.54°

TCH 50

\*2520

2.2 NM to RW09

RW09

6 NM

1.8 NM

0.7 NM

2.2 NM

CATEGORY	A	B	C	D
LNAV MDA	2240-1 851 (900-1)	2240-1¼ 851 (900-1¼)	2240-2½ 851 (900-2½)	NA
CIRCLING	2240-1¼	845 (900-1¼)	3180-3 1785 (1800-3)	NA

ELEV 1395

TDZE 1389

088°

TWR 1437

5001 X 150

27

REIL Rwy 27 0

MIRL Rwy 9-27 0