

WAAS

CH **99625**

W14A

APP CRS

144°

Rwy Idg

3600

TDZE

977

Apt Elev

992

RNAV (GPS) RWY 14

NEW HOLSTEIN MUNI (8D1)

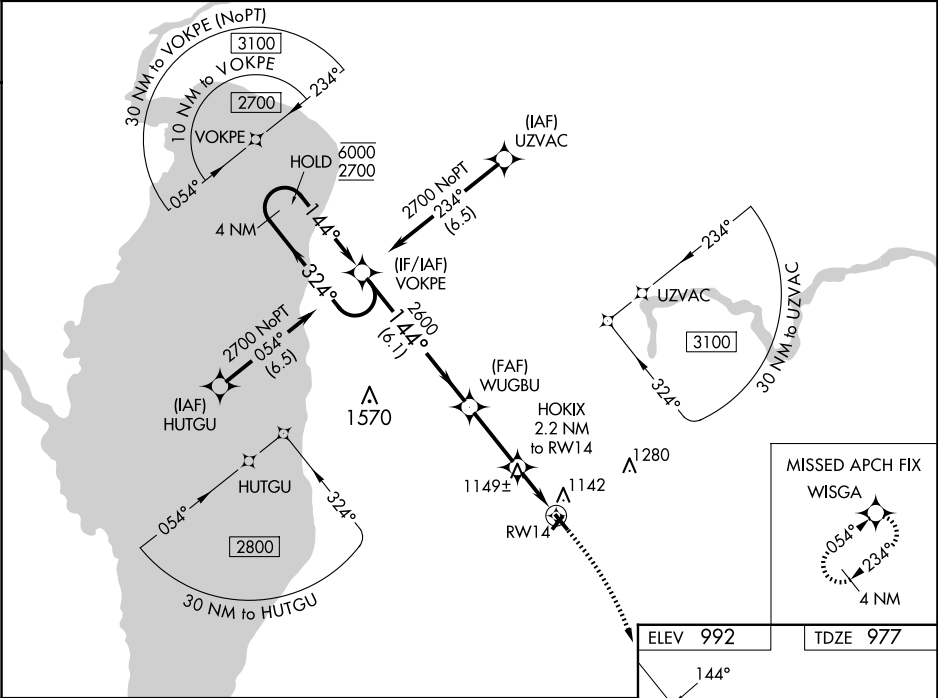
RNP APCH.

NA

Rwy 14 helicopter visibility reduction below $\frac{3}{4}$ SM NA. Baro-VNAV NA.
Use Oshkosh altimeter setting, when not received use Appleton altimeter setting.

MISSED APPROACH: Climb to 1500 then climbing right turn to 3000 direct WISGA and hold.

OSH ASOS 125.9	MILWAUKEE APP CON 127.0 263.075	UNICOM 123.0 (CTAF) 0
--------------------------	---	---------------------------------



VGSI and RNAV glidepath not coincident (VGSI Angle 3.20/TCH 27).

1500

3000

WISGA

4 NM Holding Pattern

VOKPE

WUGBU

HOKIX 2.2 NM to RW14

RW14

6000

2700

GP 3.00° TCH 45

324°

144°

2600

1720

6.1 NM

2.8 NM

2.2 NM

* LNAV only.

ELEV 992

TDZE 977

144°

1

2

3

4

5

22

0.6% up

3600 x 75

285 x 250

32

CATEGORY	A	B	C	D
LPV DA	1358-1 $\frac{1}{8}$	381 (400-1 $\frac{1}{8}$)	NA	NA
LNAV/VNAV DA	1390-1 $\frac{1}{4}$	413 (400-1 $\frac{1}{4}$)	NA	NA
LNAV MDA	1480-1	503 (500-1)	NA	NA

REIL Rwy 14 and 32 0

MIRL Rwy 14-32 0

NEW HOLSTEIN, WISCONSIN

Orig-C 07NOV19

43°57'N-88°07'W

NEW HOLSTEIN MUNI (8D1)

RNAV (GPS) RWY 14