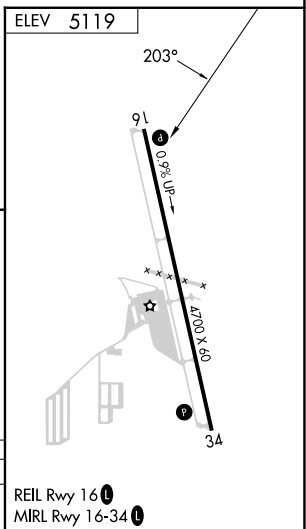
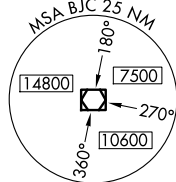


25107

VOR-A
ERIE MUNI (EIK)

MISSED APPROACH: Climbing right turn to 7300 on BJC VOR/DME R-023 to SHATZ/13.5 DME and hold, continue climb-in-hold to 7300.

UNICOM
123.0 (CTAF) **L**



ERIE MUNI (EIK)
VOR-A

40°01'N-105°03'W

SW-1, 10 JUL 2025 to 07 AUG 2025