

WAAS CH <b>97405</b> <b>W19A</b>	APP CRS <b>187°</b>	Rwy Idg TDZE <b>1497</b> Apt Elev <b>1497</b>
--	------------------------	---

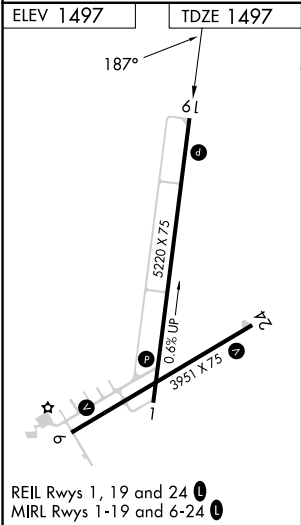
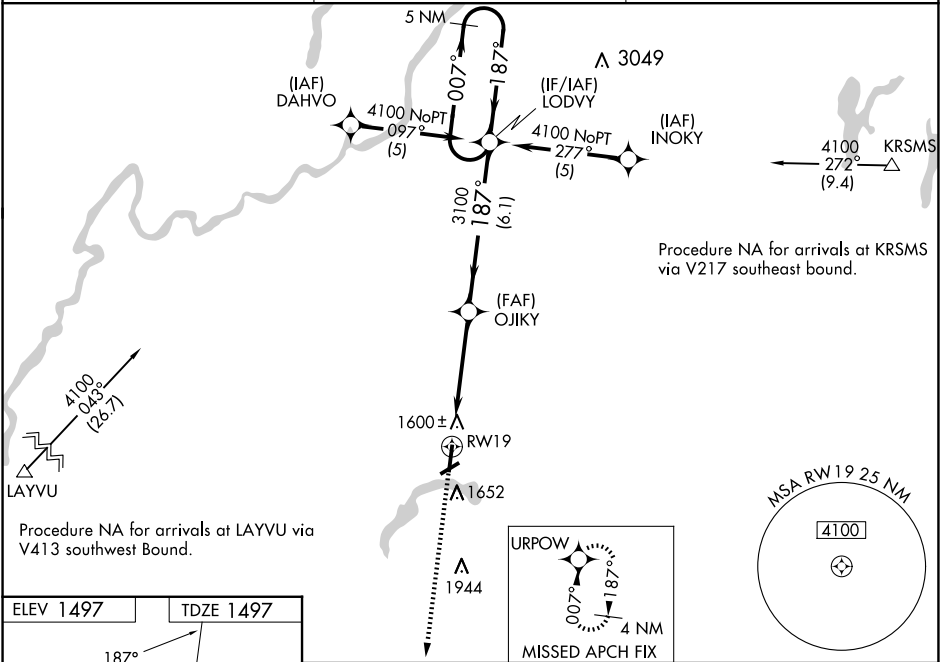
RNAV (GPS) RWY 19

PRICE COUNTY (PBH)

▼ Baro-VNAV NA when using Minocqua-Woodruff altimeter setting. When local alimeter setting not received, use Minocqua-Woodruff altimeter setting and increase all DA 91 feet and all Cats visibility 3/8 mile, increase all MDA 100 feet and all Cats C and D visibility 1/4 mile. For uncompensated Baro-VNAV systems, LNAV/VNAV NA below -17°C (2°F) or above 34°C (93°F). DME/DME RNP-0.3 NA. Helicopter visibility reduction below 3/4 SM NA. Night landing: Rwy 6, 24 NA.

▲ MISSED APPROACH: Climb to 4000 direct URPOW and hold.

AWOS-3 <b>125.875</b>	MINNEAPOLIS CENTER <b>133.65 281.5</b>	UNICOM <b>122.8 (CTAF) 0</b>
--------------------------	---	---------------------------------



4000	URPOW	VGSI and RNAV glidepath not coincident (VGSI Angle 3.00/TCH 45).		LODVY	5 NM Holding Pattern
RW19		OJIKY	3100	187°	4100
		4.9 NM	6.1 NM	GP 3.00° TCH 35	
CATEGORY	A	B	C	D	
LPV DA	1843-1 1/8		346 (400-1 1/8)		
LNAV/VNAV DA	1886-1 3/8		389 (400-1 3/8)		
LNAV MDA	1920-1	423 (500-1)	1920-1 1/4	423 (500-1 1/4)	
CIRCLING	2100-1	603 (700-1)	2100-1 3/4	763 (800-2 1/2)	2260-2 1/2