

LOC I-RGK	APP CRS	Rwy Idg	5010
110.1	091°	TDZE	778
		Apt Elev	778

ILS or LOC RWY 9

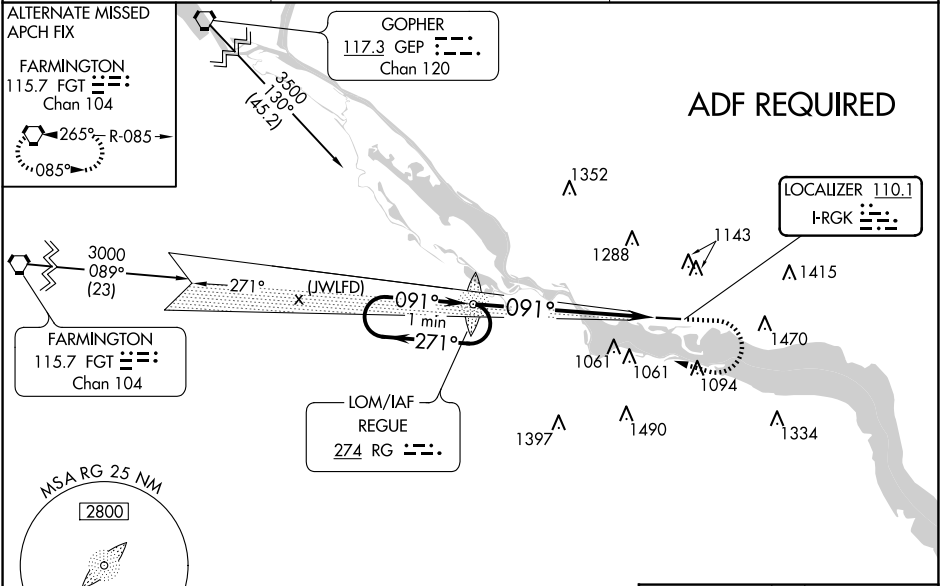
RED WING RGNL (RGK)

ADF Required. When local alimeter setting not received, use South St. Paul alimeter setting; increase S-ILS 9 DA to 1050 feet; increase all MDA 80 feet and visibility S-LOC 9 Cat C/D ½ SM and Circling Cat B/C ¼ SM. For inop MALS, increase S-LOC 9 Cat C/D visibility ¼ mile. For inop MALS when using South St. Paul alimeter setting, increase S-ILS 9 all Cats visibility ¾ mile, and S-LOC 9 Cat C/D visibility ¾ mile.

MALSRRGK

MISSED APPROACH: Climb to 2000 then climbing right turn to 3000 direct REGUE LOM and hold.

AWOS-3	MINNEAPOLIS APP CON	UNICOM
119.25	121.2 335.65	123.05 (CTAF) 0



One Minute Holding Pattern

REGUE RG LOM

2000 3000 RG

GS 3.00° TCH 50

3000 271° 091° 3000

6.6 NM

ELEV 778 TDZE 778

091° 6.6 NM from FAF

CATEGORY	A	B	C	D
S-ILS 9	978-½ 200 (200-½)			
S-LOC 9	1520-½ 742 (800-½)	1520-¾ 742 (800-¾)	1520-1¾ 742 (800-1¾)	
CIRCLING	1520-1 742 (800-1)		1640-2½ 862 (900-2½)	1780-3 1002 (1100-3)

HIRL Rwy 9-27 0

FAF to MAP 6.6 NM

Knots	60	90	120	150	180
Min:Sec	6:36	4:24	3:18	2:38	2:12