

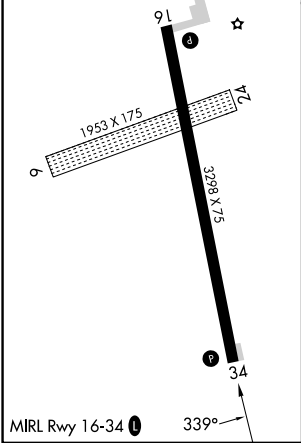
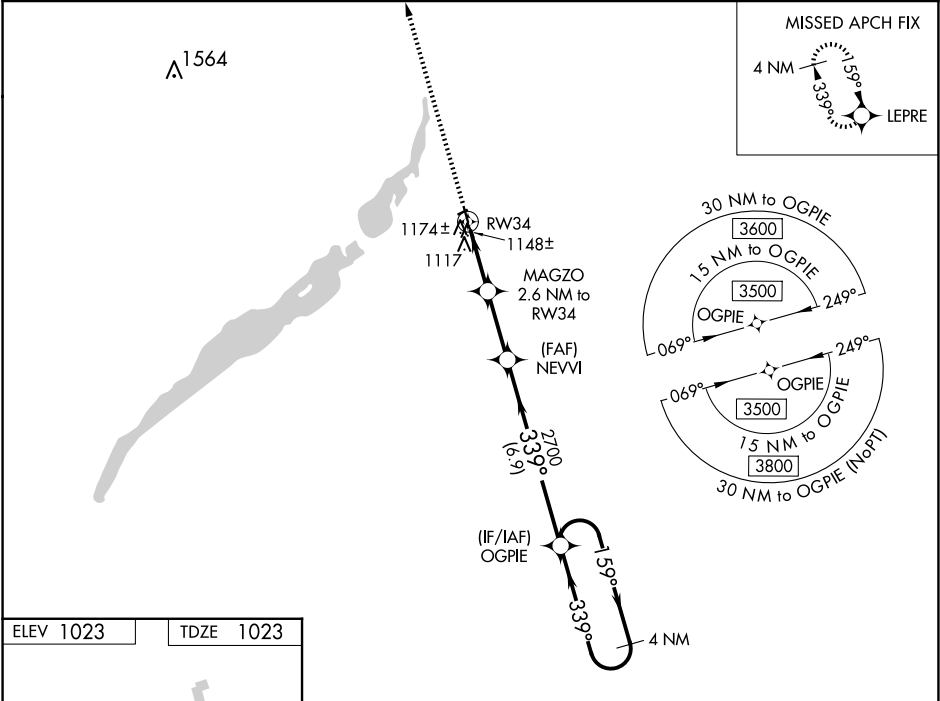
WAAS CH 86730 W34A	APP CRS 339°	Rwy Idg TDZE 1023 Apt Elev 1023
--	------------------------	---


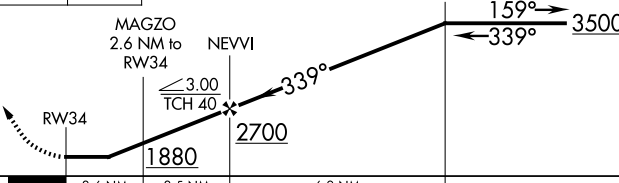
RNAV (GPS) RWY 34

WHEATON MUNI (ETH)

RNP APCH - GPS.	MISSED APPROACH: Climb to 3500 direct LEPRE and hold.
-----------------	---

AWOS-3 118.775	MINNEAPOLIS CENTER 126.1 269.2	UNICOM 122.8 (CTAF) 0
--------------------------	--	--



3500 ↑	LEPRE 	VGSI and descent angles not coincident (VGSI Angle 3.00/TCH 25).	4 NM Holding Pattern	
		OGPIE	159° → 3500 ← 339°	
MAGZO 2.6 NM to RW34		NEVVI		
RW34		3.00 TCH 40		
1880		2700		
2.6 NM		2.5 NM	6.9 NM	
CATEGORY	A	B	C	D
LP MDA	1400-1 377 (400-1)			NA
LNAV MDA	1440-1	417 (500-1)	1440-1½ 417 (500-1½)	NA
CIRCLING	1480-1	457 (500-1)	1500-1½ 477 (500-1½)	NA

NC-1, 10 JUL 2025 to 07 AUG 2025

NC-1, 10 JUL 2025 to 07 AUG 2025