

WAAS
CH **90240**
W07A

APP CRS
071°

Rwy ldg
TDZE **3131**
Apt Elev **3158**

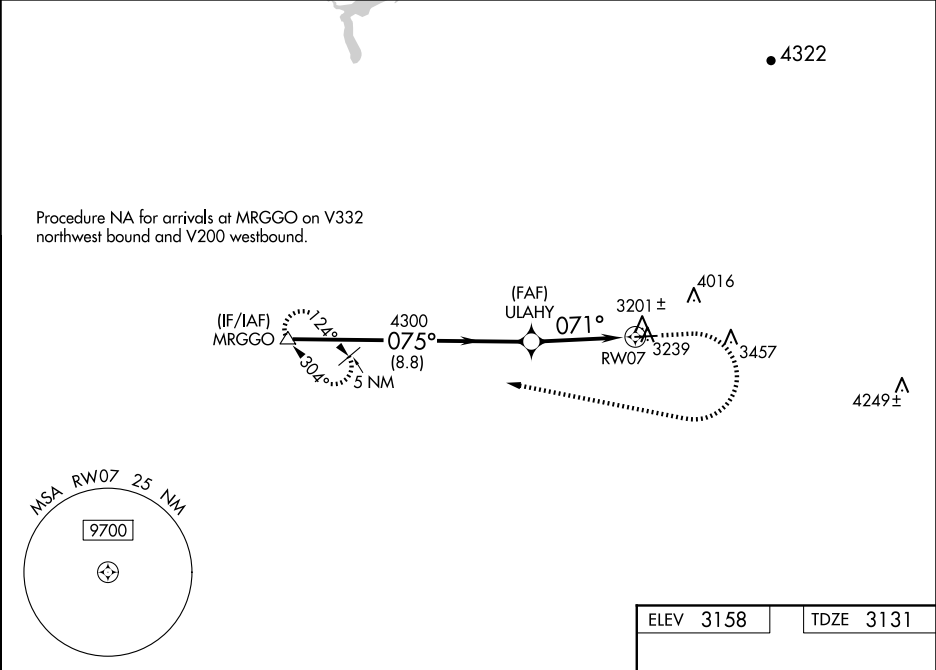
RNAV (GPS) RWY 7

NEVADA COUNTY (GOO)

RNP APCH.
Circling NA north of Rwy 7-25. Circling Rwy 25 NA at night. Rwy 7 helicopter visibility reduction below ¾ SM NA. For uncompensated Baro-VNAV systems, LNAV/VNAV NA below -21°C or above 54°C.

MISSED APPROACH: (Do not exceed 250K until MRGGO) Climb to 3900 then climbing right turn to 6000 direct MRGGO and hold.

AWOS-3 121.325	NORCAL APP CON 125.4 259.1	UNICOM 122.725 (CTAF) 0
--------------------------	--------------------------------------	-----------------------------------



MRGGO

5000

075°

4300

ULAHY

4300

071°

RW07

GP 3.00° TCH 40

8.8 NM

1.4 NM

2.3 NM

3900

6000

MRGGO

* 2.3 NM to RW07

* LNAV only.

071° to RW07

1.9% UP → 4657 X 75

25

CATEGORY	A	B	C	D
LPV DA	3606-1⅜		475 (500-1⅜)	
LNAV/ VNAV DA	3772-1⅞		641 (700-1⅞)	
LNAV MDA	3860-1	729 (800-1)	3860-2	729 (800-2)
CIRCLING	3860-1	702 (800-1)	3880-2 722 (800-2)	3880-2¼ 722 (800-2¼)

MIRL Rwy 7-25 0