

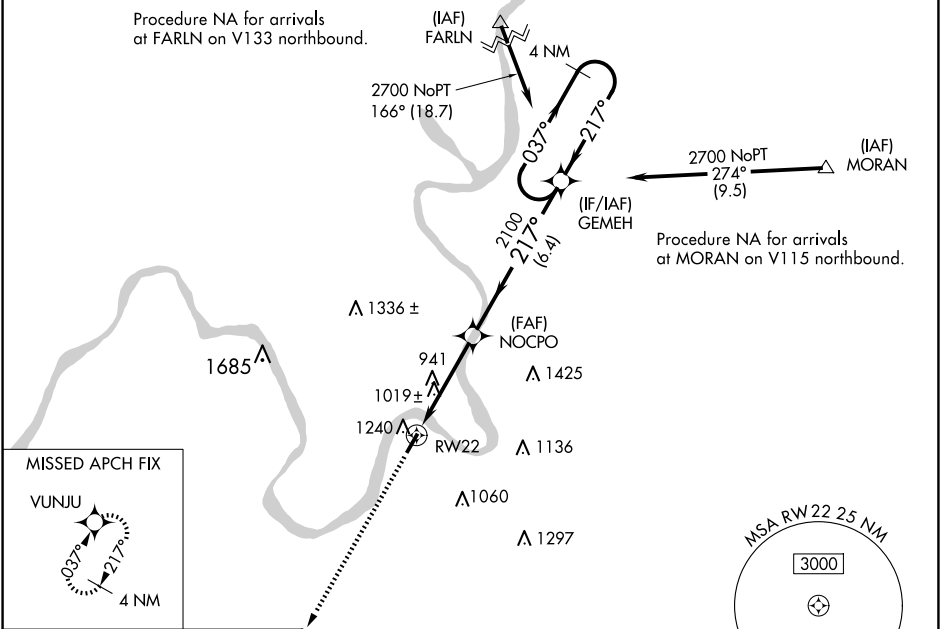
WAAS CH 61323 W22A	APP CRS 217°	Rwy Idg TDZE 758 Apt Elev 758
--	------------------------	---

RNAV (GPS) RWY 22

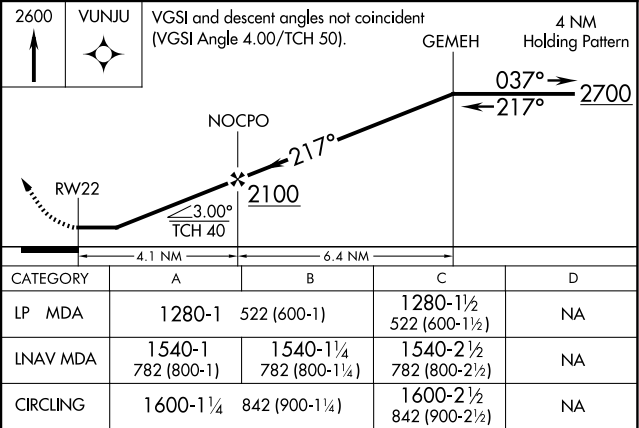
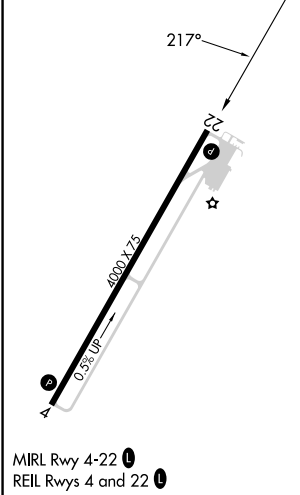
JACKSON COUNTY (I18)

RNP APCH.	When local altimeter setting not received, use Point Pleasant altimeter setting and increase all MDA 60 feet; increase LP and LNAV Cat C visibility ¼ mile. Circling Rwy 4 NA at night. Rwy 22 helicopter visibility reduction below ¾ SM NA.	MISSED APPROACH: Climb to 2600 direct VUNJU and hold.
-----------	---	--

AWOS-2 121.3	HUNTINGTON APP CON 128.4 270.1	UNICOM 122.8 (CTAF) 0
------------------------	--	---------------------------------



ELEV 758	TDZE 758
----------	----------



NE-4, 10 JUL 2025 to 07 AUG 2025

NE-4, 10 JUL 2025 to 07 AUG 2025