

APP CRS
174°

Rwy Idg
4000

TDZE
984

Apt Elev
985

RNAV (GPS) RWY 17
CHANDLER RGNL (CQB)

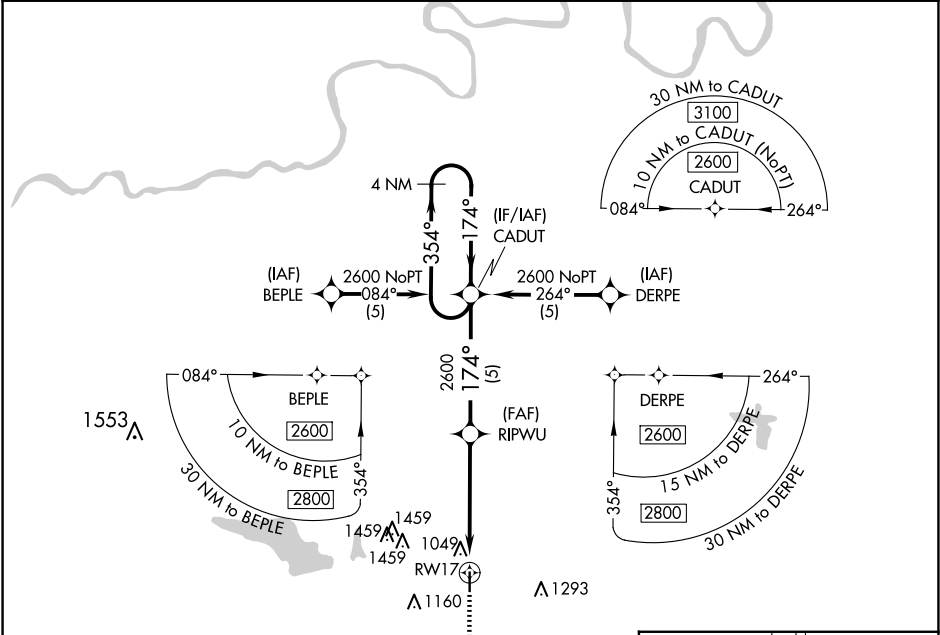
RNP APCH.

▼
▲

When local altimeter setting not received, use Shawnee altimeter setting and increase all MDA 80 feet; increase LNAV Cat C visibility 1/8 SM.

MISSED APPROACH: Climb to 2600 via 174° course to CALKI WP and hold.

AWOS-3PT 119.275	KANSAS CITY CENTER 127.8 319.1	CTAF 122.9 0
---------------------	-----------------------------------	-----------------



MISSED APCH FIX

CALKI

354° 174° 4 NM

4 NM Holding Pattern

VGSI and descent angles not coincident (VGSI Angle 3.00/TCH 42).

2600

CALKI

174° crs

2600

354° 174°

2600

3.00° TCH 31

1 NM to RW17

RW17

5 NM 4 NM 1 NM

CATEGORY	A	B	C	D
LNAV MDA	1300-1	316 (400-1)		NA

MIRL Rwy 17-35 0