

VORTAC TFD	APP CRS	Rwy Idg	5200
114.8	048°	TDZE	1458
Chan 95		Apt Elev	1464

VOR RWY 5

CASA GRANDE MUNI (CGZ)

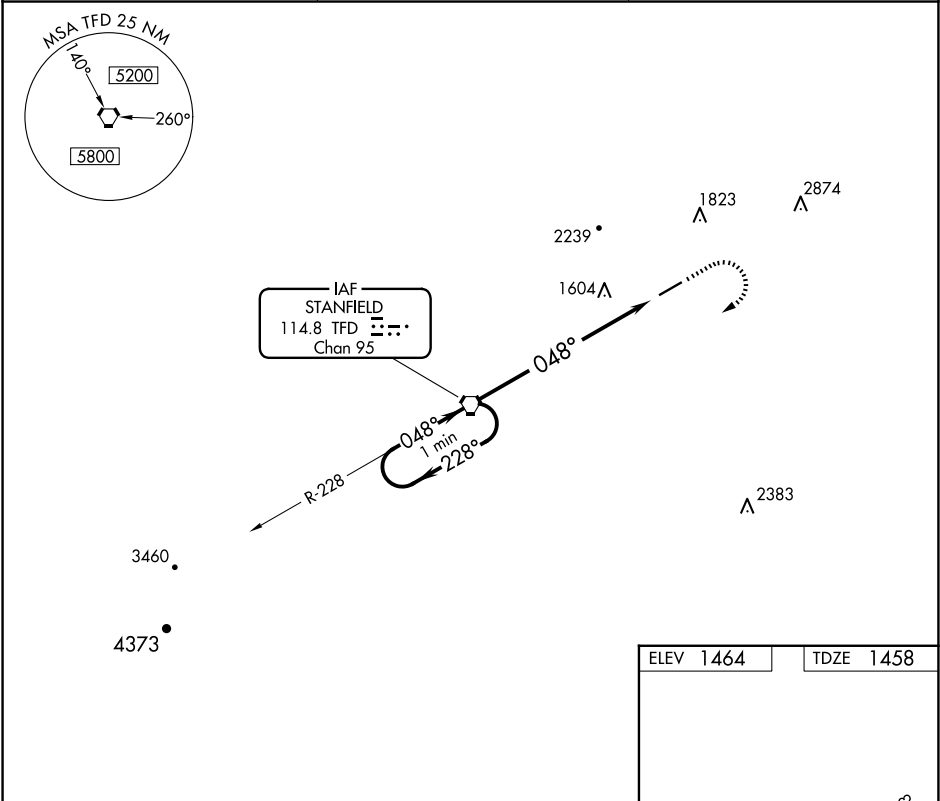
▼

For inop ALS, increase S-5 Cats A/B visibility to 1 mile.
Rwy 5 helicopter visibility reduction below ¾ SM NA.
Circling Rwy 23 NA at night.

MALSR

MISSED APPROACH: Climb to 2200, then climbing right turn to 3500 direct TFD VORTAC and hold.

AWOS-3PT 132.175	ALBUQUERQUE CENTER 125.4 269.3	UNICOM 122.7 (CTAF) 0
---------------------	-----------------------------------	--------------------------



One Minute Holding Pattern

TFD VORTAC

3500 ← 228°
048° →

2200 3500 TFD

TFD 6.4 TFD 7.8

6.4 NM 1.4

CATEGORY	A	B	C	D
S-5	1960-¾	502 (500-¾)	NA	
CIRCLING	1960-1	496 (500-1)	NA	

ELEV 1464 TDZE 1458

MIRL Rwy 5-23

FAF to MAP 7.8 NM

Knots	60	90	120	150	180
Min:Sec	7:48	5:12	3:54	3:07	2:36

SW-4, 10 JUL 2025 to 07 AUG 2025

SW-4, 10 JUL 2025 to 07 AUG 2025