

APP CRS
151°

Rwy Idg
5100

TDZE
968

Apt Elev
968

RNAV (GPS) RWY 15

HARRY STERN (BWP)

RNP APCH - GPS.

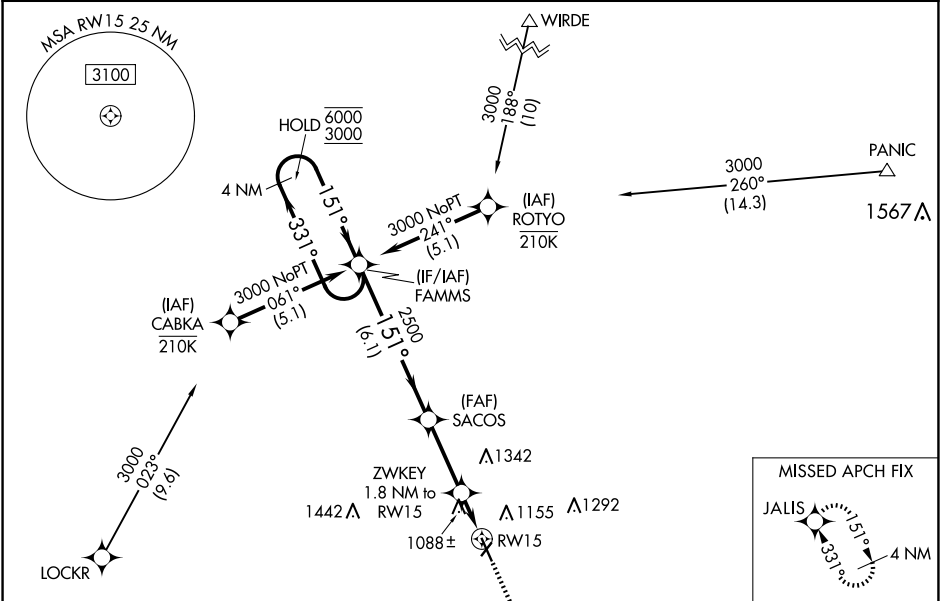
▼

⚠

Circling NA to Rwy 3 and 21. Rwy 15 helicopter visibility reduction below ¾ SM NA. VDP NA when using FFM altimeter setting. When local altimeter setting not received, use FFM altimeter setting and increase all MDAs 80 feet and LNAV visibility Cat C and D ¾ SM, and Circling visibility Cat C and D ¼ SM.

MISSED APPROACH: Climb to 3000 direct JALIS and hold.

AWOS-3 127.875	MINNEAPOLIS CENTER 127.35 278.3	UNICOM 123.0 (CTAF) 0
-------------------	------------------------------------	--------------------------



ELEV 968 TDZE 968

151°

91

5100 X 75

324 X 180

33

4 NM Holding Pattern

FAMMS

SACOS

ZWKEY 1.8 NM to RW15

3000 JALIS

6000 331°

3000 151°

151°

2500

3.00° TCH 42

1580

1 NM to RW15

RW15

6.1 NM

2.9 NM

0.8

1 NM

CATEGORY	A	B	C	D
LNAV MDA	1340-1 372 (400-1)			
CIRCLING	1520-1 552 (600-1)	1660-2 692 (700-2)	1660-2¼ 692 (700-2¼)	

MIRL Rwy 15-33 0

REIL Rwy 15 and 33 0