

ANTLERS, OKLAHOMA

AL-6650 (FAA)

24025

RNAV (GPS) RWY 35

ANTLERS MUNI (80F)

WAAS CH 70428 W35A	APP CRS 355°	Rwy Idg 4001 TDZE 576 Apt Elev 577
--	------------------------	---

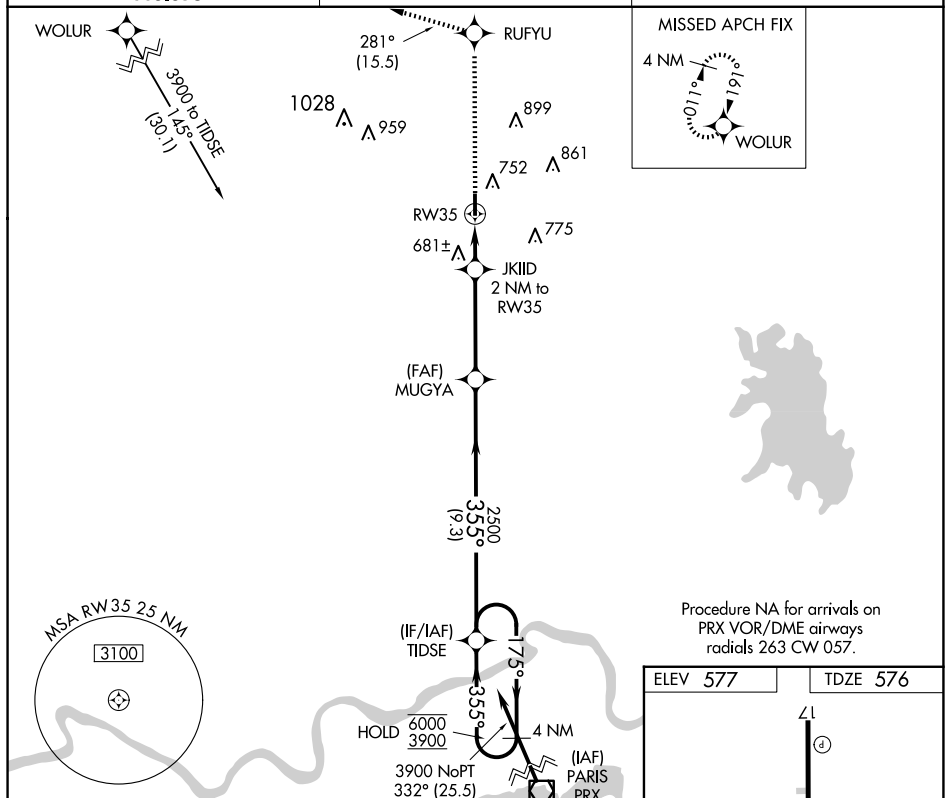
RNP APCH.

NA Circling to Rwy 17 NA at night. Rwy 35 helicopter visibility reduction below $\frac{3}{4}$ SM NA. Baro-VNAV NA. Use Paris altimeter setting; when not received, use Durant altimeter setting and increase LPV and LNAV/VNAV DA to 937 feet, increase all MDA 40 feet.

to 3900 direct RUFYU and
on track 281° to WOLUR
and hold.

PRX AWOS-3PT
119,675

FORT WORTH CENTER
124.875 370.95

CTAF
122.9 L

Procedure NA for arrivals on
PRX VOR/DME airways
radials 263 CW 057.

3900

↑

RUFYU

✱

Ir 281°

✱

WOLUR

✱

MUGYA

2500

TIDSE

4 NM Holding Pattern

* LNAV only.

RW35

2 NM to RW35

1240*

2500

355°

175° → 6000


← 355° 3900

GP 3.00° TCH 40

2 NM

3.9 NM

9.3 NM

CATEGORY		A	B	C	D
LPV	DA	911-1 $\frac{1}{8}$	335 (400-1 $\frac{1}{8}$)	NA	
LNAV/ VNAV	DA	911-1 $\frac{1}{8}$	335 (400-1 $\frac{1}{8}$)	NA	
LNAV	MDA	1020-1	444 (500-1)	NA	
	CIRCLING	1140-1	563 (600-1)	NA	

ANTLERS, OKLAHOMA
Orig-B 30JAN20

34°12'N-95°39'W

ANTLERS MUNI (80F)

RNAV (GPS) RWY 35

SC-1, 10 JUL 2025 to 07 AUG 2025