

WAAS  
CH 42839  
W03A

APP CRS  
030°

Rwy ldg  
TDZE  
Apt Elev

8500  
954  
969

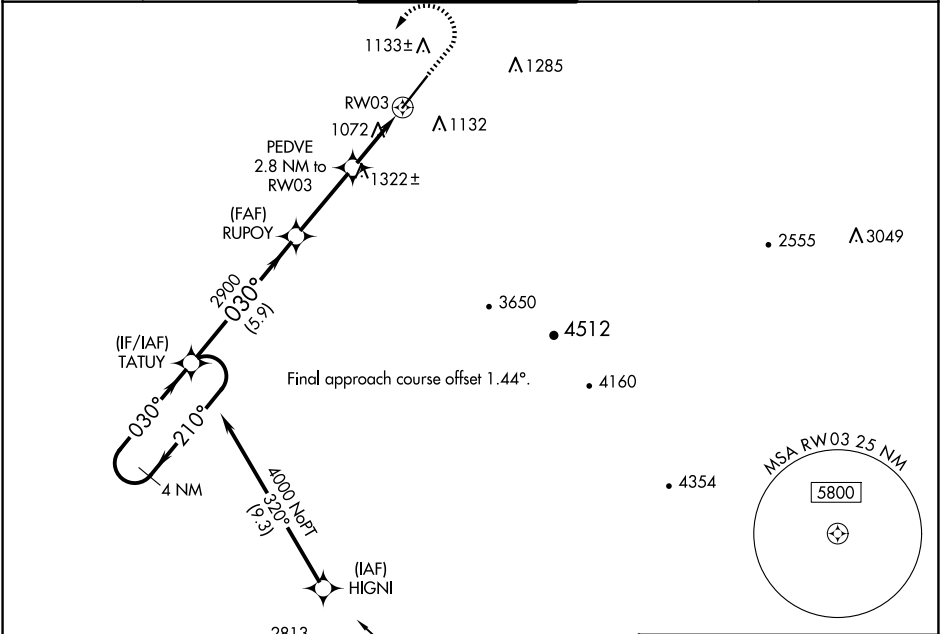
RNAV (GPS) RWY 3  
PHOENIX GOODYEAR (GYR)

RNP APCH.

Procedure NA at night. Helicopter visibility reduction below ¾ SM NA. VDP NA when using Phoenix Sky Harbor Intl altimeter setting. When local altimeter setting not received, use Phoenix Sky Harbor Intl altimeter setting; increase all MDA 80 feet and visibility LP/LNAV Cat C/D and Circling Cat C ¼ SM.

MISSED APPROACH: Climb to 1900 then climbing left turn to 4000 direct TATUY and hold.

ATIS 118.35	LUKE APP CON ★ 125.45 263.125	GOODYEAR TOWER ★ 120.1 (CTAF) 239.3	GND CON 121.7	UNICOM 122.95
----------------	----------------------------------	--	------------------	------------------



4 NM Holding Pattern

TATUY

RUPOY

PEDVE 2.8 NM to RW03

1900 4000 TATUY

1.1 NM to RW03

3.00° TCH 53

1880

5.9 NM 3.2 NM 1.7 NM 1.1 NM

CATEGORY	A	B	C	D
LP MDA	1340-1 386 (400-1)	1340-1½ 386 (400-1½)	1340-1¾ 386 (400-1¾)	1340-2 386 (400-2)
LNAV MDA	1580-1 626 (700-1)	1580-1¼ 626 (700-1¼)	1580-1½ 626 (700-1½)	1580-1¾ 626 (700-1¾)
CIRCLING	1580-1 611 (700-1)	1580-1¼ 611 (700-1¼)	1860-2¾ 891 (900-2¾)	1920-3 951 (1000-3)

ELEV 969 TDZE 954

0.4% UP

0.3% DOWN

TWR

030° to RW03

REIL Rwy 3 and 21

MIRL Rwy 3-21