

NOTE: Chart not to scale.

**TOP ALTITUDE:
ASSIGNED BY ATC**

LUKE DEP CON★
125.45 263.125
PHOENIX DEP CON
120.7 239.0

ATIS

118.35
GND CON

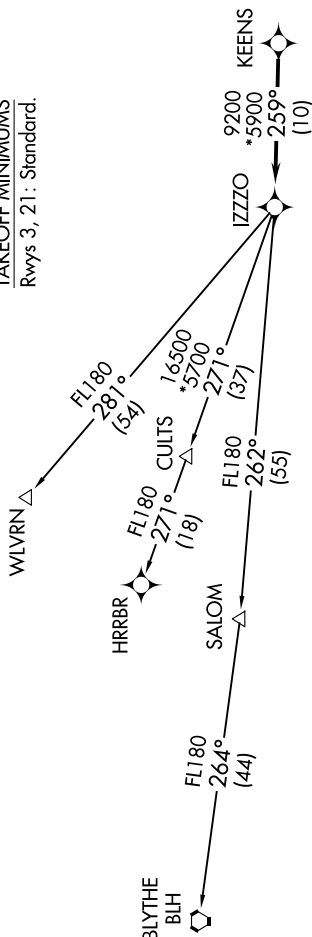
121.7

GOODYEAR TOWER★

120.1 239.3

NOTE: Turbojets and turboprops only.
NOTE: Aircraft requesting FL220 and below must file BLYTHE Transition.
NOTE: Turbojets landing LAX, file WLVN Transition.
NOTE: Aircraft landing other than LAX and turboprops landing at LAX: Requesting FL240 and above, file HRRBR Transition.
NOTE: Aircraft departing KGEU and KGVR ATC assigned only.

TAKEOFF MINIMUMS
Rwys 3, 21: Standard.



DEPARTURE ROUTE DESCRIPTION

TAKEOFF RUNWAY 3: Climb on heading 028° or as assigned by ATC, thence...

TAKEOFF RUNWAY 21: Climb on heading 228° or as assigned by ATC, thence. . .

...for RADAR vectors to KEENS, then on track 259° to IZZO, then on (transition). Maintain ATC assigned altitude, expect filed altitude 3 minutes after departure.

BLYTHE TRANSITION (IZZZO8.BLH)

HRRBR TRANSITION (JZZO8.HRRBR)

WLVN TRANSITION (IZZ08.WLVN)

IZZZO EIGHT DEPARTURE (RNAV)

(IZZO8.IZZO) 25JAN24

GOODYEAR, ARIZONA
PHOENIX GOODYEAR (GYR)

SW-4, 10 JUL 2025 to 07 AUG 2025