

WAAS CH <b>72917</b> <b>W07A</b>	APP CRS <b>074°</b>	Rwy Idg TDZE Apt Elev	<b>7299</b> <b>1460</b> <b>1478</b>
----------------------------------------	------------------------	-----------------------------	-------------------------------------------

RNAV (GPS) RWY 7R

PHOENIX DEER VALLEY (DVT)

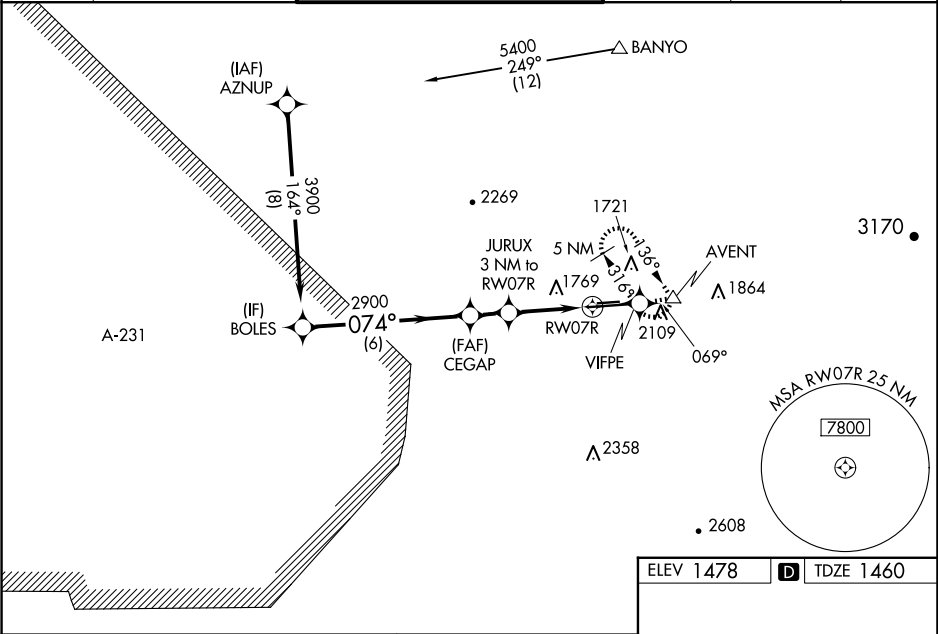
RNP APCH - GPS.

▼

When VGSI inop, Circling Rwy 25R NA at night. When local altimeter setting not received, use Scottsdale altimeter setting: increase LPV DA to 1822 feet and all visibilities ½ SM, increase LNAV/VNAV DA to 2160 feet and all visibilities ½ SM, increase all MDAs 40 feet and increase Circling Cat B visibility ¼ SM. For uncompensated Baro-VNAV systems, LNAV/VNAV NA below -17°C or above 54°C. Baro VNAV and VDP NA when using Scottsdale altimeter setting. Circling NA north of Rwy 7R-25L at night.

MISSED APPROACH: Climb to 5000 direct VIFPE and track 069° to AVENT and hold, continue climb-in-hold to 5000.

ATIS <b>126.5</b>	PHOENIX APP CON <b>120.7 239.0</b>	DEER VALLEY TOWER ★ <b>118.4</b> (070°-250°) (CTAF) <b>120.2</b> (251°-069°)	GND CON <b>121.8</b>	CLNC DEL <b>123.9</b>	UNICOM <b>122.95</b>
----------------------	---------------------------------------	------------------------------------------------------------------------------------	-------------------------	--------------------------	-------------------------



VGSI and RNAV glidepath not coincident (VGSI Angle 3.00/TCH 46).

5000

VIFPE

tr 069°

AVENT

GP 3.00°  
TCH 42

BOLES

CEGAP

JURUX  
3 NM to  
RW07R

1.8 NM to  
RW07R

RW07R

3900

2900

2440

074°

6 NM

1.4 NM

1.2 NM

1.8 NM

CATEGORY	A	B	C	D
LPV DA		1795-1½	335 (400-1½)	
LNAV/VNAV DA		2133-2½	673 (700-2½)	
LNAV MDA	2060-1	600 (600-1)	2060-1¾	600 (600-1¾)
CIRCLING	2400-1¼ 922 (1000-1¼)	2420-1¼ 942 (1000-1¼)	2580-3 1102 (1200-3)	2700-3 1222 (1300-3)

TWR  
1637 ±

4500 X 75

0.5% UP

8196 X 100

0.4% DOWN

0.5% UP

0.4% DOWN

25R

25L

MIRL Rwy 7L-25R and 7R-25L  
REIL Rwy 7L, 7R, 25L, and 25R