

**TOP ALTITUDE:
ASSIGNED BY ATC**

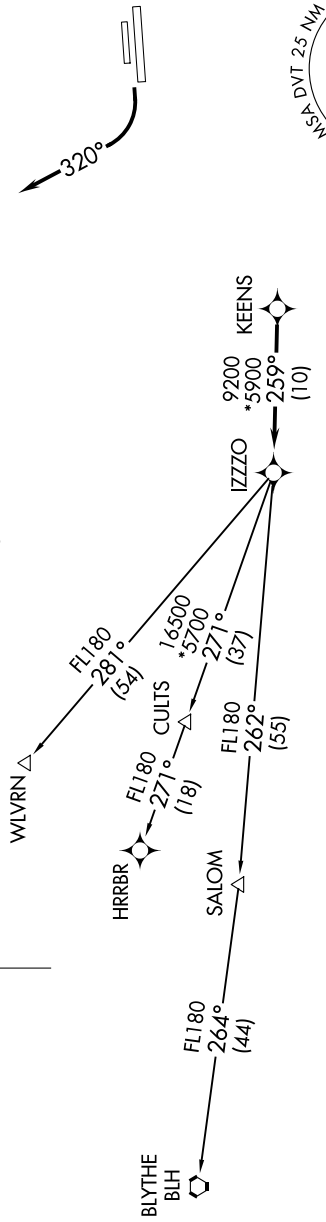
PHOENIX DEP CON
120.7 239.0
ATIS
126.5
CLINC DEL
123.9
GND CON
121.8
DEER VALLEY TOWER
118.4 (Rwy 7R-25L)
120.2 (Rwy 7L-25R)

Turbojets and turboprops only.
 NOTE: Aircraft requesting FL220 and below must file BLYTHE Transition.
 NOTE: Turbojets landing LAX, file WLVN Transition.
 NOTE: Aircraft landing other than LAX and turboprops landing at LAX:
 NOTE: Requesting FL240 and above, file HRRBR Transition.
 NOTE: Aircraft departing KGEU and KGVR ATC assigned only.

TAKEOFF MINIMUMS

Rwys 7L/R: NA - Obstacles.

Rwys 25L/R: Standard with minimum climb of 370'/NM to 4600.



DEPARTURE ROUTE DESCRIPTION

TAKEOFF RUNWAYS 25L/R: Climbing right turn heading 320° or as assigned by ATC, thence. . . .

...for RADAR vectors to KEENS, then on track 259° to IZZO, then on (transition).

Maintain ATC assigned altitude, expect filed altitude 3 minutes after departure.

BLYTHE TRANSITION (IZZO8.BLH)

HRRBR TRANSITION (IZZ08.HRRBR)

WLVN TRANSITION (JZZO8.WLVN)

IZZZO EIGHT DEPARTURE (RNAV)

(IZZO8.IZZO) 25JAN24

PHOENIX, ARIZONA
PHOENIX DEER VALLEY (DVT)