

WAAS CH 90326 W34A	APP CRS 344°	Rwy Idg 3502 TDZE 1279 Apt Elev 1279
--	------------------------	---

RNAV (GPS) RWY 34

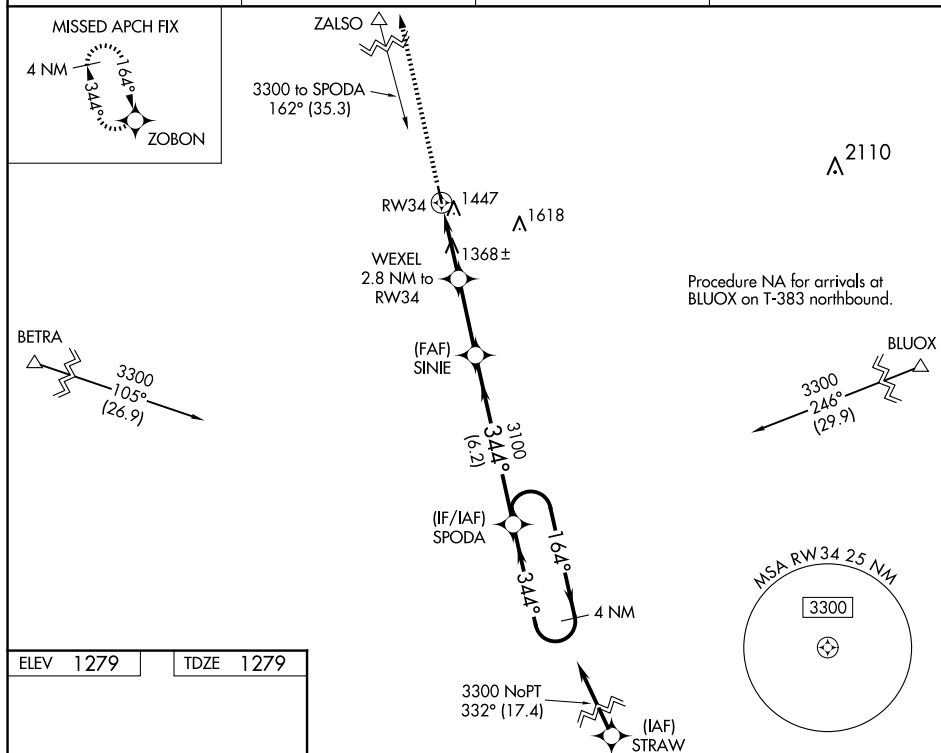
FOSSTON MUNI/ANDERSON FLD (FSE)

RNP APCH.

T VDP NA when using Thief River Falls altimeter setting. When local altimeter setting not received, use Thief River Falls altimeter setting and increase all MDA 100 feet and increase **A** LP and LNAV Cat C visibility $\frac{3}{8}$ SM, and increase Circling Cat C visibility $\frac{1}{2}$ SM.

MISSED APPROACH:
Climb to 4000 direct
ZOBON and hold.

AWOS-3 118.35	MINNEAPOLIS CENTER 134.75 251.1	GCO 121.725	CTAF 122.9
-------------------------	---	-----------------------	----------------------

[illegible]