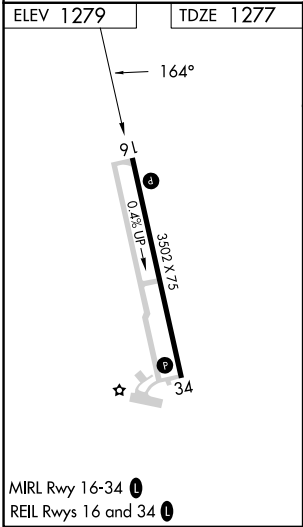
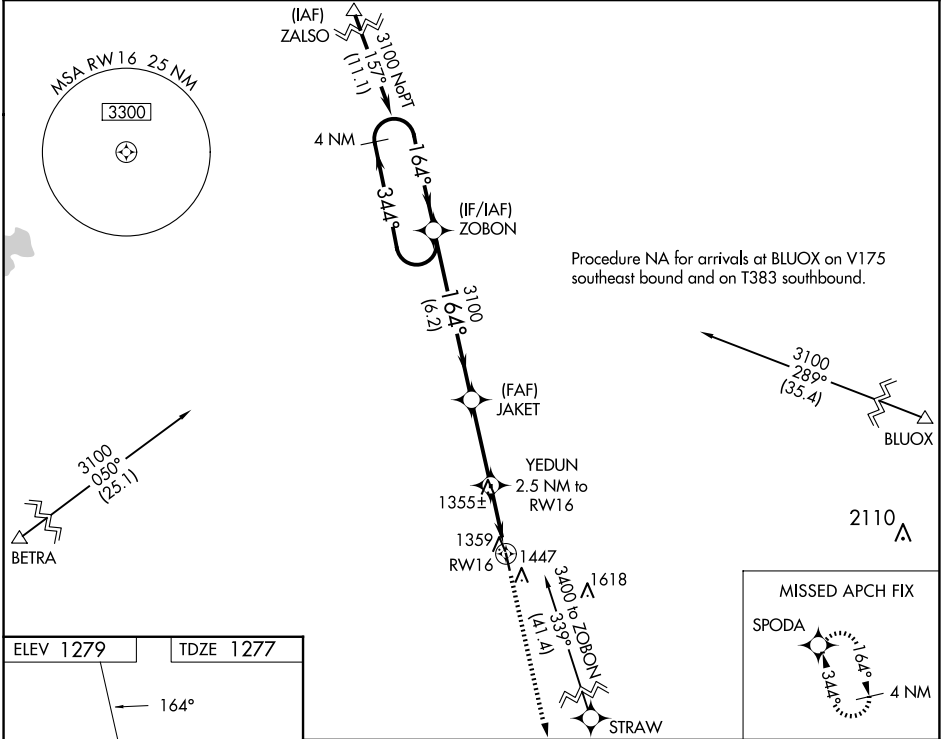


WAAS CH 82226 W16A	APP CRS 164°	Rwy Idg TDZE 1277 Apt Elev 1279
--	------------------------	---

RNAV (GPS) RWY 16
FOSSTON MUNI/ANDERSON FLD (F'SE')

RNP APCH.	VDP NA with Thief River Falls altimeter setting. When local altimeter setting not received, use Thief River Falls altimeter setting and increase all MDA 100 feet and increase LP and LNAV Cat C visibility 3/8 SM, Circling Cat C visibility 1/2 SM.	MISSED APPROACH: Climb to 4000 direct SPODA and hold.
-----------	---	---

AWOS-3 118.35	MINNEAPOLIS CENTER 134.75 251.1	GCO 121.725	CTAF 122.9
-------------------------	---	-----------------------	----------------------



VGSI and descent angles not coincident (VGSI Angle 2.80/TCH 25).			
4 NM Holding Pattern	ZOBON	JAKET	YEDUN 2.5 NM to RW16
3100	344°	164°	3100
164°			3.00° TCH 40
			2100
			1.1 NM to RW16
			1.4 NM
			1.1 NM
CATEGORY	A	B	C
LP MDA	1620-1	343 (400-1)	NA
LNAV MDA	1640-1	363 (400-1)	NA
CIRCLING	1860-1	581 (600-1)	1860-1 1/2 581 (600-1 1/2)

NC-1, 10 JUL 2025 to 07 AUG 2025

NC-1, 10 JUL 2025 to 07 AUG 2025