

VORTAC BYP	APP CRS	Rwy Ldg	N/A
114.6	214°	TDZE	N/A
Chan 93		Apt Elev	589

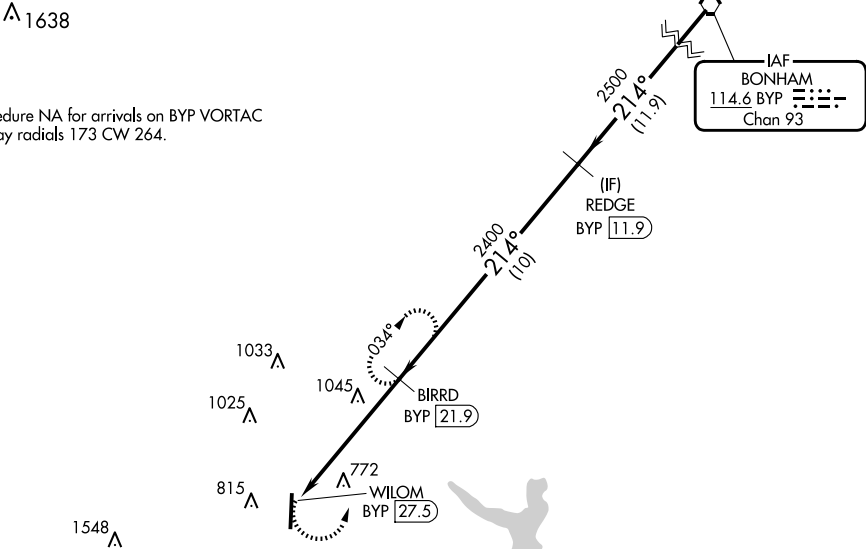
VOR/DME-A
MCKINNEY NTL (TKI)

When local altimeter setting not received use Dallas Love Fld altimeter setting and increase all MDA 80 feet and Cats C and D visibility ¼ mile.

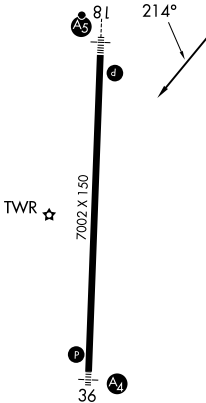
MISSED APPROACH: Climbing left turn to 2400 on BYP VORTAC R-214 to BIRRD/BYP 21.9 DME and hold.

ATIS	LONE STAR APP CON	MC KINNEY TOWER ★	GND CON	CLNC DEL	UNICOM
119.925	124.3 282.275	118.825 (CTAF) 0	121.875	121.35 (When twr closed)	122.95

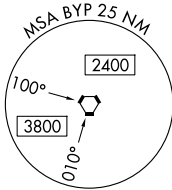
Procedure NA for arrivals on BYP VORTAC
airway radials 173 CW 264.



ELEV 589



HRL Rwy 18-36



	BIRRD BYP 21.9	BIRRD BYP 21.9	REDGE BYP 11.9	BYP VORTAC
	2400 BYP R-214	2400	2500	2500
	5.6 NM	10 NM	11.9 NM	
CATEGORY	A	B	C	D
CIRCLING	1360-1 771 (800-1)	1360-1¼ 771 (800-1¼)	1360-2¼ 771 (800-2¼)	1380-2½ 791 (800-2½)