

DALLAS, TEXAS

AL-6644 (FAA)

25163

WAAS CH 49202 W36A	APP CRS 359°	Rwy Ldg 7002 TDZE 589 Apt Elev 589
--	------------------------	---

RNAV (GPS) RWY 36
MCKINNEY NTL (TKI)

▼ For uncompensated Baro-VNAV systems, LNAV/VNAV NA below -8°C (18°F) or above 54°C (130°F). When local altimeter setting not received, use Dallas Love Fld altimeter setting and increase all DA 70 feet and all MDA 80 feet, and increase LNAV/VNAV all Cats visibility ½ mile, LNAV Cat C/D and Circling Cat C/D visibility ¼ mile.

▲ DME/DME RNP-0.3 NA. VDP and Baro-VNAV NA when using Dallas Love Fld altimeter setting. For inop MALS increase LNAV/VNAV all Cats visibility to ¾ mile and LNAV Cat D visibility to 1 mile. For inop MALS when using Dallas Love Fld altimeter setting increase LPV all Cats visibility to ¾ mile, LNAV/VNAV Cat D visibility to 1½ mile, and LNAV Cat D visibility to 1¼ mile. Inop table does not apply to LPV all Cats.

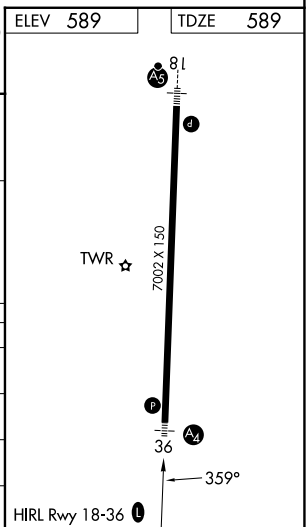
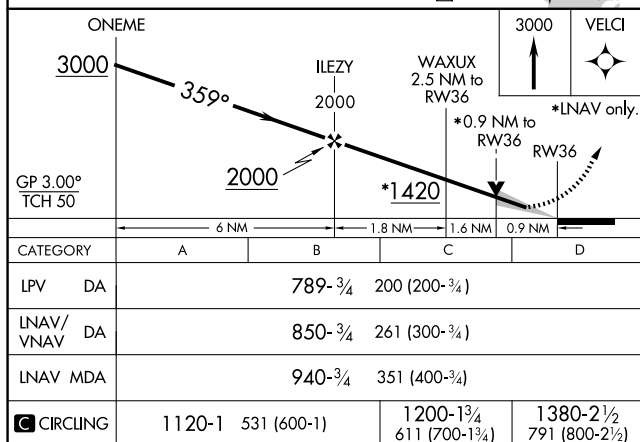
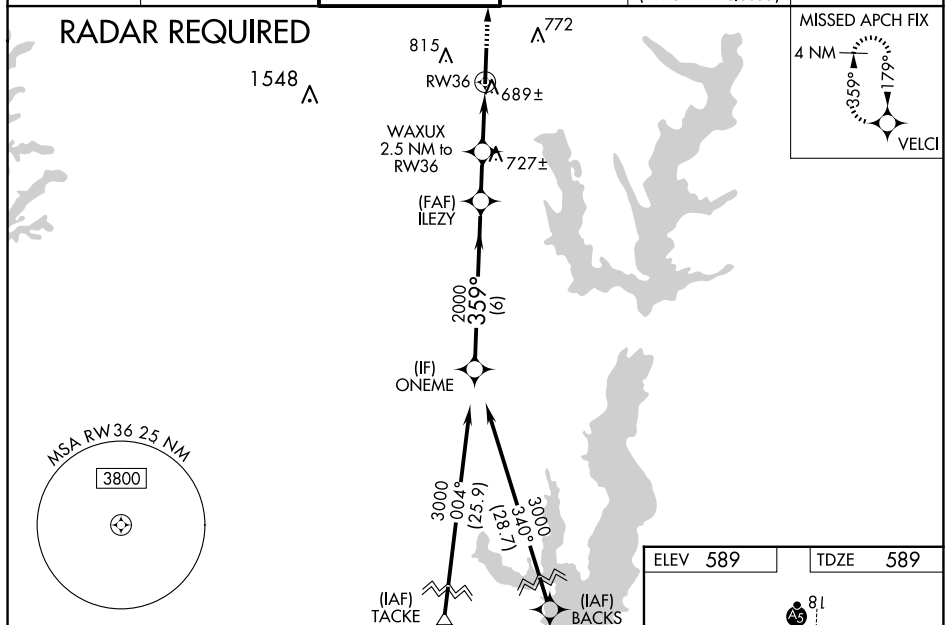
MALS



MISSED APPROACH:
Climb to 3000 direct
VELCI and hold.

ATIS 119.925	LONE STAR APP CON 124.3 282.275	MC KINNEY TOWER ★ 118.825 (CTAF) 0	GND CON 121.875	CINC DEL 121.35 (When twr closed)	UNICOM 122.95
------------------------	---	---	---------------------------	--	-------------------------

RADAR REQUIRED



DALLAS, TEXAS
Amdt 3B 23JUN16

33°11'N-96°35'W

MCKINNEY NTL (TKI)
RNAV (GPS) RWY 36

SC-2, 10 JUL 2025 to 07 AUG 2025