

WAAS CH <b>87102</b> <b>W18A</b>	APP CRS <b>179°</b>	Rwy Ldg TDZE <b>576</b> Apt Elev <b>589</b>
--	------------------------	---

RNAV (GPS) RWY 18

MCKINNEY NTL (TKI)

⚠

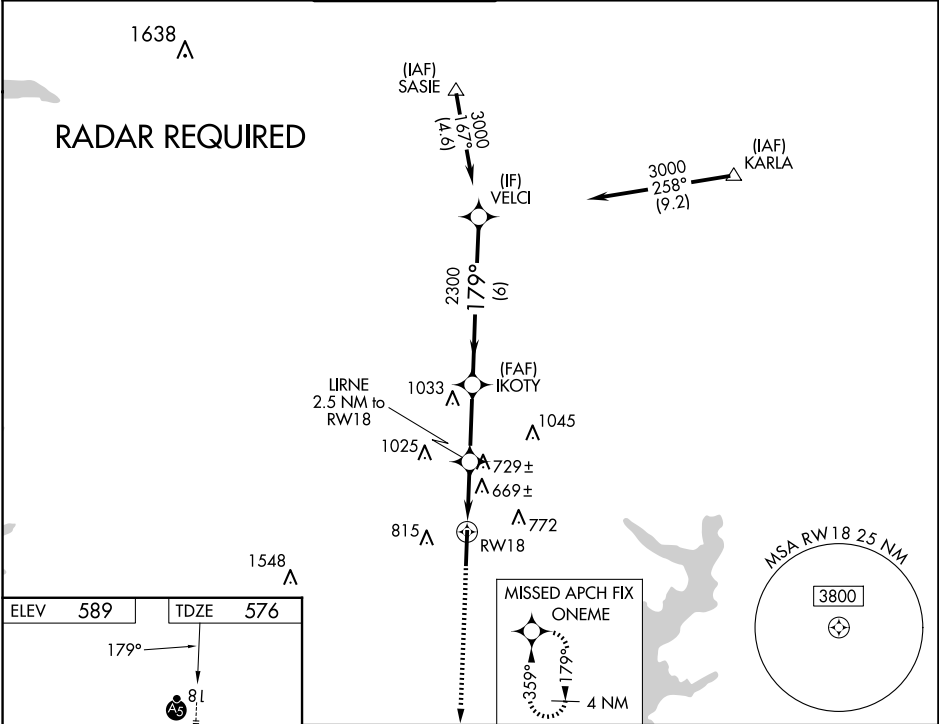
DME/DME RNP-0.3 NA. VDP NA with Dallas Love Fld altimeter setting. When local altimeter setting not received, use Dallas Love Fld altimeter setting and increase all DA 70 feet and all MDA 80 feet, increase LNAV Cats C and D ½ mile, and Circling Cats C and D visibility ½ mile. For inop MALSR when using Dallas Love Fld altimeter setting increase LPV all Cats visibility to 1 mile.

MALSR

AS

MISSED APPROACH:  
Climb to 3000 direct ONEME and hold.

ATIS <b>119.925</b>	LONE STAR APP CON <b>124.3 282.275</b>	MC KINNEY TOWER ★ <b>118.825</b> (CTAF) <b>0</b>	GND CON <b>121.875</b>	CLNC DEL <b>121.35</b> (When twr closed)	UNICOM <b>122.95</b>
------------------------	---	---	---------------------------	--	-------------------------



3000	ONEME	IKOTY	2300	179°	3000
*LNAV only.	LIRNE 2.5 NM to RW18	*0.9 NM to RW18	1420*	2300	GP 3.00° TCH 50
0.9 NM	1.6 NM	2.8 NM	6 NM		
CATEGORY	A	B	C	D	
LPV	DA	776-½	200 (200-½)		
LNAV	MDA	920-½	344 (400-½)	920-⅝	344 (400-⅝)
CIRCLING		1040-1 451 (500-1)	1120-1 531 (600-1)	1200-1¾ 611 (700-1¾)	1380-2½ 791 (800-2½)