

LOC/DME I-EFE	APP CRS	Rwy Ldg	7002
109.35	179°	TDZE	576
Chan 30(Y)		Apt Elev	589

ILS or LOC RWY 18

MCKINNEY NTL (TKI)

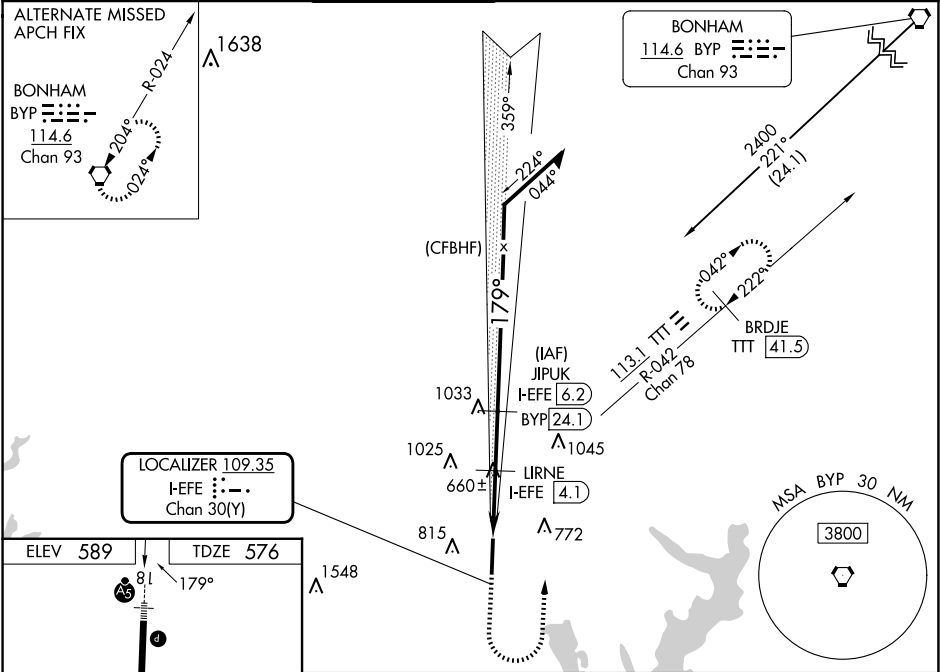
DME required for procedure entry.
DME required.

VDP NA when using Dallas Love Fld altimeter setting. When local altimeter setting not received, use Dallas Love Fld altimeter setting and increase all DA 70 feet and all MDA 80 feet, increase S-LOC 18 Cats C/D visibility ½ SM, increase Circling visibility Cat C ½ SM, Cat D ¼ SM. For inop ALS, increase S-LOC 18 Cats C/D visibility to 1 SM. For inop ALS when using Dallas Love Fld altimeter setting, increase S-ILS 18 all Cats visibility to ¾ SM and increase S-LOC 18 Cats C/D to 1 ¼ SM.

MALSR

MISSED APPROACH:
Climb to 1500 then climbing left turn to 2400 on heading 360° and on TTT VOR/DME R-042 to BRDJE/TTT 41.5 DME and hold.

ATIS 119.925	LONE STAR APP CON 124.3 282.275	MC KINNEY TOWER ★ 118.825(CTAF) 0	GND CON 121.875	CLNC DEL 121.35 (When twr closed)	UNICOM 122.95
-----------------	------------------------------------	--------------------------------------	--------------------	---	------------------



ELEV 589	TDZE 576
81	179°
TWR ★	7002 X 150
36	A2
HIRL Rwy 18-36 0	
1500	2400
hdg 360°	TTT R-042
BRDJE TTT 41.5	JIPUK I-EFE 6.2
*LOC only.	Remain within 10 NM
*I-EFE 2.5	LIRNE I-EFE 4.1
I-EFE 1.6	2100
1420*	359°
179°	2400
2100	GS 3.00° TCH 53
0.9	1.6
2.1 NM	
CATEGORY	A
S-ILS 18	776-½ 200 (200-½)
S-LOC 18	920-½ 344 (400-½) 920-5/8 344 (400-5/8)
1040-1 451 (500-1)	1120-1 531 (600-1)
1200-13/4 611 (700-13/4)	1380-2½ 791 (800-2½)
CIRCLING	