

WAAS CH <b>77740</b> <b>W15A</b>	APP CRS <b>148°</b>	Rwy Idg TDZE Apt Elev	<b>4000</b> <b>270</b> <b>270</b>
--	------------------------	-----------------------------	---

RNAV (GPS) RWY 15

CENTRAL MAINE/NORRIDGEWOCK (OWK)

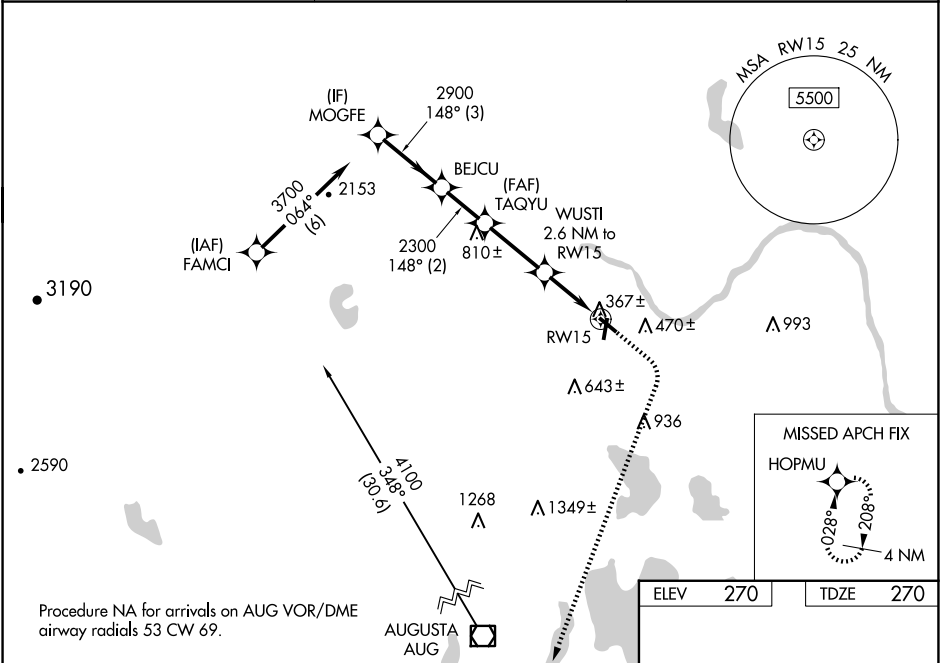
▼

▲ NA

For uncompensated Baro-VNAV systems, LNAV/VNAV NA below -15°C (5°F) or above 54°C (130°F). Baro-VNAV and VDP NA when using Augusta State altimeter setting. Rwy 15 helicopter visibility reduction below ¾ SM NA. DME/DME RNP-0.3 NA. When local altimeter setting not received, use Augusta State altimeter setting; increase LPV DA to 607 feet, LNAV/VNAV DA 659 feet and LNAV/VNAV visibility all Cats ½ SM. Increase all MDA 80 feet and LNAV Cat C visibility ¼ SM and Circling Cat C visibility ½ SM. Circling Rwy 3, 21, 33 NA at night.

MISSED APPROACH:  
Climb to 800 then climbing right turn to 2900 direct HOPMU and hold.

AWOS-AV <b>123.075</b>	PORTLAND APP CON ★ <b>128.35 299.2</b>	UNICOM <b>122.8 (CTAF) 0</b>
---------------------------	---	---------------------------------



MOGFE		VGSI and descent angles not coincident (VGSI Angle 3.00/TCH 43).			800	2900	HOPMU
3700		148°		BEJCU	TAQYU	WUSTI	
GP 3.50° TCH 40		2900	2300	2.6 NM to RW15	*1 NM to RW15	*LNAV only.	
		2300	*1260	RW15			
		3 NM	2 NM	2.8 NM	1.6 NM	1 NM	
CATEGORY		A	B	C	D		
LPV DA		540-1 270 (300-1)			NA		
LNAV/ VNAV DA		592-1 322 (400-1)			NA		
LNAV MDA		680-1 410 (500-1)		680-1½ 410 (500-1½)		NA	
CIRCLING		800-1 530 (600-1)	960-1 690 (700-1)	1080-2¼ 810 (900-2¼)		NA	

