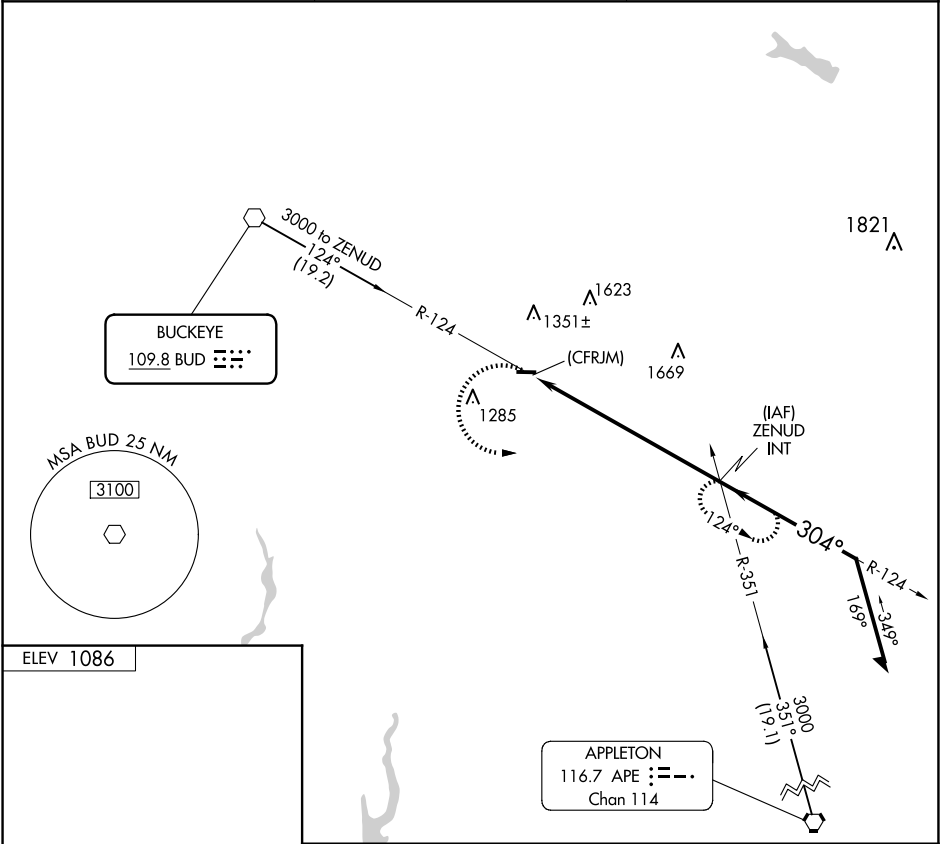


VOR BUD 109.8	APP CRS 304°	Rwy Idg TDZE Apt Elev N/A N/A 1086
-------------------------	------------------------	--

VOR-A
MORROW COUNTY (4I9)

NA	Circling Rwy 28 NA at night. Rwy 28 helicopter visibility reduction below 1 SM NA. Use Marion altimeter setting, when not received use Mansfield altimeter setting and increase all MDA 60 feet and all visibilities ¼ SM.	MISSED APPROACH: Climbing left turn to 3000 on BUD VOR R-124 to ZENUD INT and hold.
-----------	--	---

AWOS-3PT 121.4	COLUMBUS APP CON 125.95 317.775	UNICOM 122.8 (CTAF)
--------------------------	---	-------------------------------



ELEV 1086		3000		ZENUD INT		ZENUD INT		Remain within 10 NM	
MIRL Rwy 10-28		BUD R-124		ZENUD INT		ZENUD INT		3000	
FAF to MAP 7.8 NM		CATEGORY		A		B		C	
Knots		60		90		120		150	
Min:Sec		7:48		5:12		3:54		3:07	
CIRCLING		1880-1		794 (800-1)		1940-2½		854 (900-2½)	
NA									

EC-2, 10 JUL 2025 to 07 AUG 2025

EC-2, 10 JUL 2025 to 07 AUG 2025