

PARKER, ARIZONA

AL-6633 (FAA)

23278

WAAS CH 72936 W02A	APP CRS 016°	Rwy Idg 6250 TDZE 456 Apt Elev 458
--	------------------------	---

RNAV (GPS) RWY 2
AVI SUQUILLA (P2Ø)

RNP APCH - GPS.

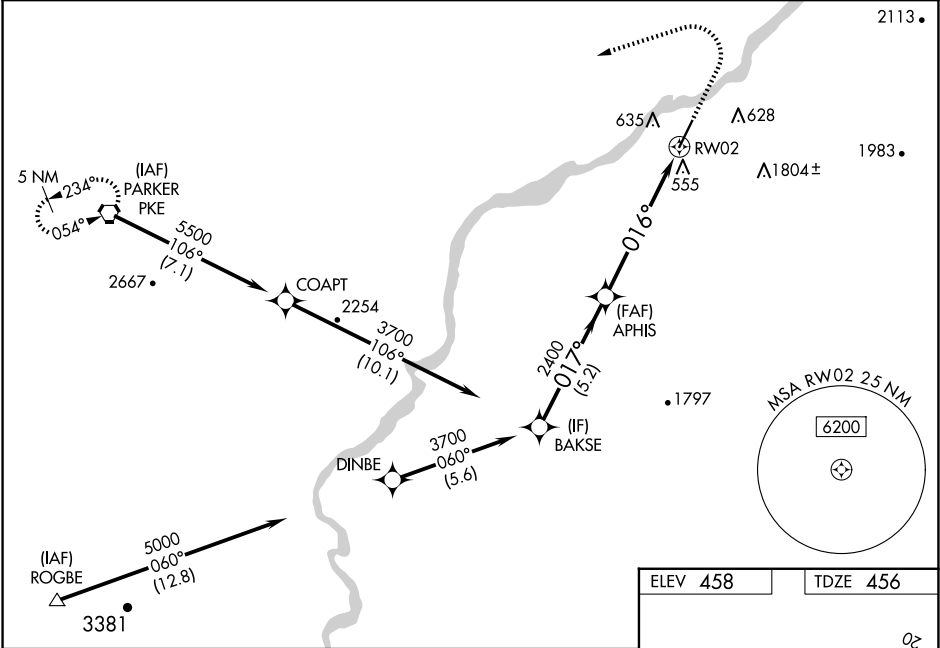
▼

Δ NA

For uncompensated Baro-VNAV systems, LNAV/VNAV NA below -1.5°C or above 54°C. Baro-VNAV and VDP NA when using Blythe altimeter setting. When local altimeter setting not received, use Blythe altimeter setting and increase LPV DA to 804 feet and all visibilities ¼ SM. Increase LNAV/VNAV DA to 1018 feet and all visibilities ¼ SM. Increase all MDAs 100 feet and LNAV visibility Cat B/C ¼ SM, and Circling visibility Cat B ¼ SM.

MISSED APPROACH: (Do not exceed 180K until PKE VORTAC) Climb to 1100, then climbing left turn to 5600 direct PKE VORTAC and hold, continue climb-in-hold to 5600.

AWOS-3PT 132.75	LOS ANGELES CENTER 128.15 285.6	UNICOM 122.725 (CTAF) Ø
---------------------------	---	-----------------------------------



BAKSE

3700

017°

2400

016°

APHIS

2400

1100

5600

PKE

1.9 NM to RW02

GP 3.00°

TCH 40

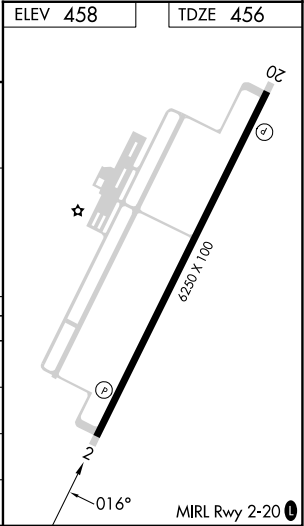
5.2 NM

4.1 NM

1.9 NM

RW02

CATEGORY	A	B	C	D
LPV DA	706-¾	250 (300-¾)		NA
LNAV/VNAV DA	920-1⅓	464 (500-1⅓)		NA
LNAV MDA	1100-1	644 (700-1)	1100-3 644 (700-3)	NA
CIRCLING	1100-1	642 (700-1)	1580-3 1122 (1200-3)	NA



PARKER, ARIZONA
Amdt 1 05OCT23

34°09'N-114°16'W

AVI SUQUILLA (P2Ø)
RNAV (GPS) RWY 2

SW-4, 10 JUL 2025 to 07 AUG 2025

SW-4, 10 JUL 2025 to 07 AUG 2025