

WAAS
CH **40124**
W21A

APP CRS
197°

Rwy Idg
TDZE
Apt Elev
8422
7032
7055

RNAV (GPS) RWY 21

SPRINGERVILLE MUNI (JTC)

▼

▲ NA

DME/DME RNP-0.3 NA. Rwy 3, 11, 29 helicopter visibility reduction below 1 SM NA. Circling Rwy 3, 11, 29 NA at night.

MISSED APPROACH: Climbing right turn to 12000 direct IFADE and hold, continue climb-in-hold to 12000.

AWOS-3PT 119.65	ALBUQUERQUE CENTER 132.9 239.05	UNICOM 122.8 (CTAF) 0
---------------------------	---	---------------------------------

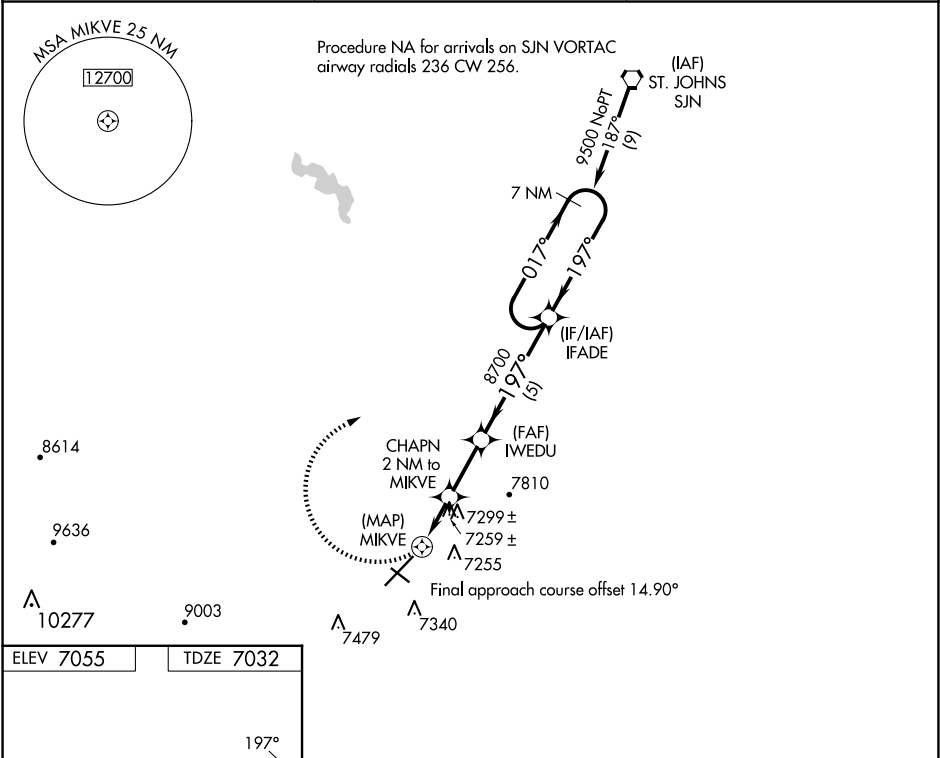


Diagram of runway 21 showing a 0.4% DOWN slope and a 0.6% UP slope. The runway is 8422 Y 75 and 4603 X 60. The angle is 28°.

Diagram of the missed approach procedure. The procedure starts at 12000 ft, descends to 7900 ft at a 3.20° angle (TCH 40). The distance from the start of the descent to the missed approach point (MAP) is 1.5 NM. The MAP is 0.5 NM from the runway. The missed approach point is 0.5 NM from the runway. The missed approach procedure is 1.5 NM to MIKVE. The missed approach procedure is