

WAAS CH 93804 W18A	APP CRS 176°	Rwy Idg TDZE Apt Elev	5201 1277 1277
--	------------------------	-----------------------------	---

RNAV (GPS) RWY 18

WELLINGTON MUNI (E/GT)

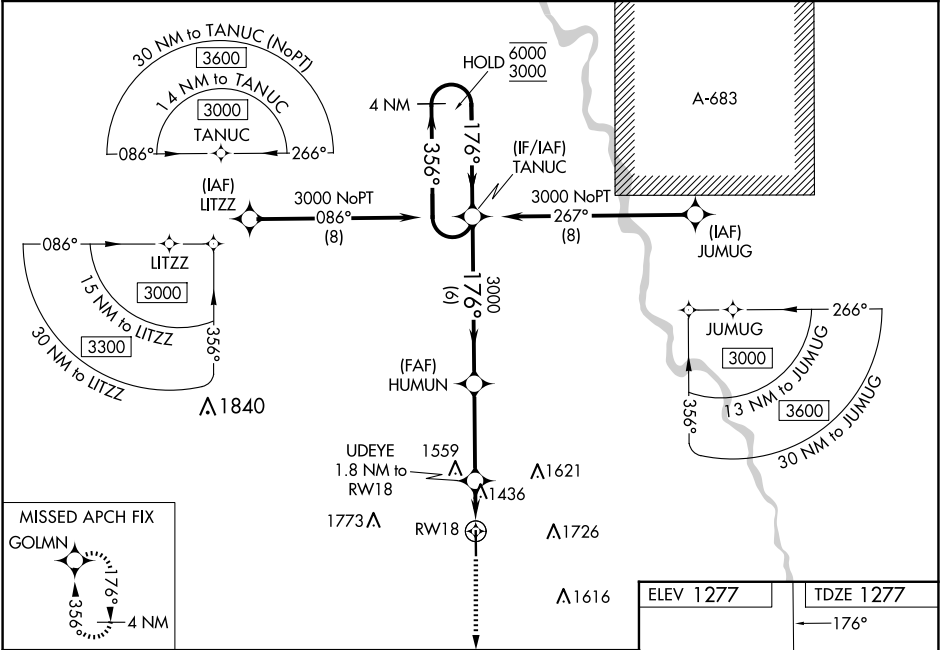
RNP APCH - GPS.

⚠

Baro-VNAV and VDP NA when using ICT altimeter setting. For uncompensated Baro-VNAV systems, LNAV/VNAV NA below -17°C or above 54°C. When local altimeter setting not received, use ICT altimeter setting: increase LPV DA to 1530 feet; increase LNAV/VNAV DA to 1775 feet; increase all MDAs 60 feet and LNAV Cat's C/D visibility 1⁄8 SM and Circling Cat C/D visibility 1⁄4 SM.

MISSED APPROACH: Climb to 3000 direct GOLMN and hold.

AWOS-3P 118.875	WICHITA APP CON 134.85	UNICOM 122.8 (CTAF) 0
---------------------------	----------------------------------	---------------------------------



4 NM Holding Pattern		TANUC	HUMUN	3000	UEYE 1.8 NM to RW18	1900	1.2 NM to RW18	RW18
6000 ← 356° 3000 → 176°		176° → 3000		↑ 3000				GOLMN
GP 3.00° TCH 42		6 NM		3.5 NM	0.6	1.2 NM		
CATEGORY	A	B	C	D				
LPV DA	1477-1 200 (200-1)							
LNAV/VNAV DA	1722-1 ³ / ₈ 445 (500-1 ³ / ₈)							
LNAV MDA	1700-1	423 (500-1)	1700-1 ¹ / ₄	423 (500-1 ¹ / ₄)				
CIRCLING	1760-1	483 (500-1)	2040-2 ¹ / ₄ 763 (800-2 ¹ / ₄)	2140-2 ³ / ₄ 863 (900-2 ³ / ₄)				

