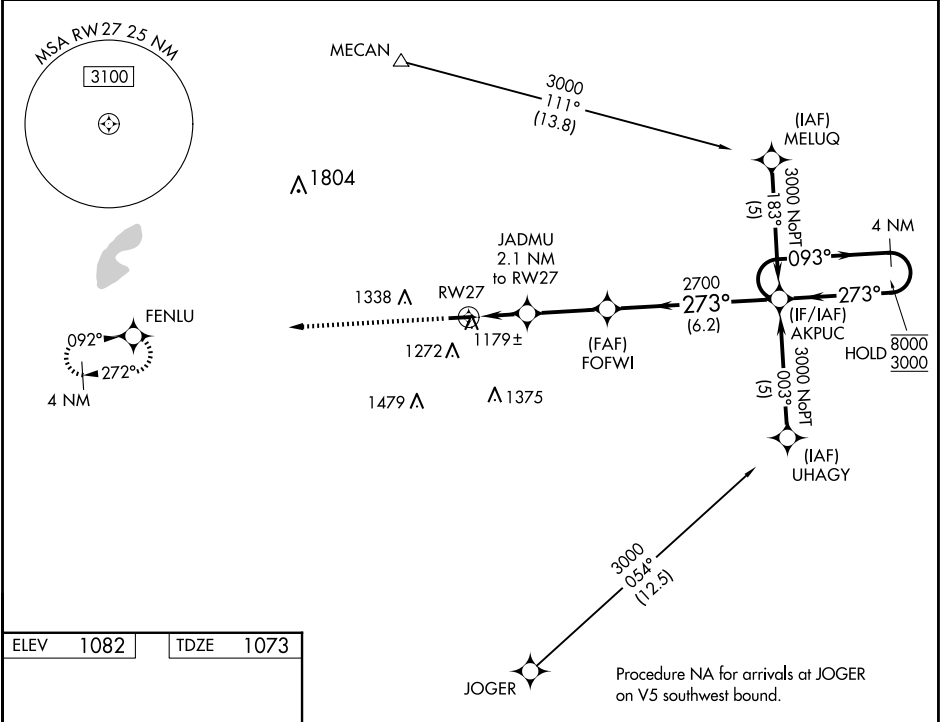


WAAS CH <b>61009</b> <b>W27A</b>	APP CRS <b>273°</b>	Rwy Ldg TDZE <b>1073</b> Apt Elev <b>1082</b>
--	------------------------	---

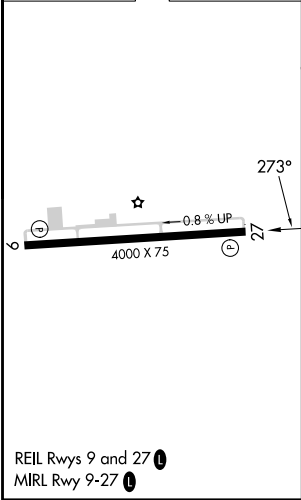
RNAV (GPS) RWY 27

MADISON COUNTY (UYF)

RNP APCH - GPS		MISSED APPROACH: Climb to 3000 direct FENLU and hold.
Rwy 27 helicopter visibility reduction below ¾ SM NA. For uncompensated Baro-VNAV systems, LNAV/VNAV NA below -17°C or above 54°C.		
AWOS-3PT <b>120.85</b>	COLUMBUS APP CON <b>134.0 279.6</b>	UNICOM <b>123.0 (CTAF) 0</b>



ELEV 1082	TDZE 1073
-----------	-----------



3000 FENLU		VGSi and RNAV glidepath not coincident (VGSi Angle 3.00/TCH 31).		4 NM Holding Pattern
*LNAV only.		JADMU 2.1 NM to RW27	FOFWI 2700	AKPUC
*1.4 NM to RW27		*1740	2700	093° 8000 273° 3000
1.4 0.7 2.9 NM		6.2 NM	GP 3.00° TCH 40	
CATEGORY	A	B	C	D
LPV DA	1400-1¼ 327 (400-1¼)			
LNAV/VNAV DA	1449-1½ 376 (400-1½)			
LNAV MDA	1540-1	467 (500-1)	1540-1¾ 467 (500-1¾)	1540-1½ 467 (500-1½)
CIRCLING	1600-1 518 (600-1)	1640-1 558 (600-1)	1640-1½ 558 (600-1½)	1840-2½ 758 (800-2½)

EC-2, 10 JUL 2025 to 07 AUG 2025

EC-2, 10 JUL 2025 to 07 AUG 2025