

APP CRS
355°

Rwy Ldg **3498**
TDZE **1102**
Apt Elev **1102**

RNP APCH.

▼

▲ NA

❄ -22°C

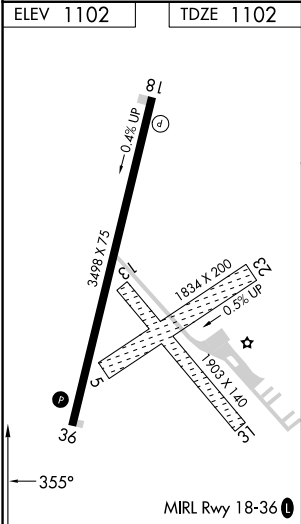
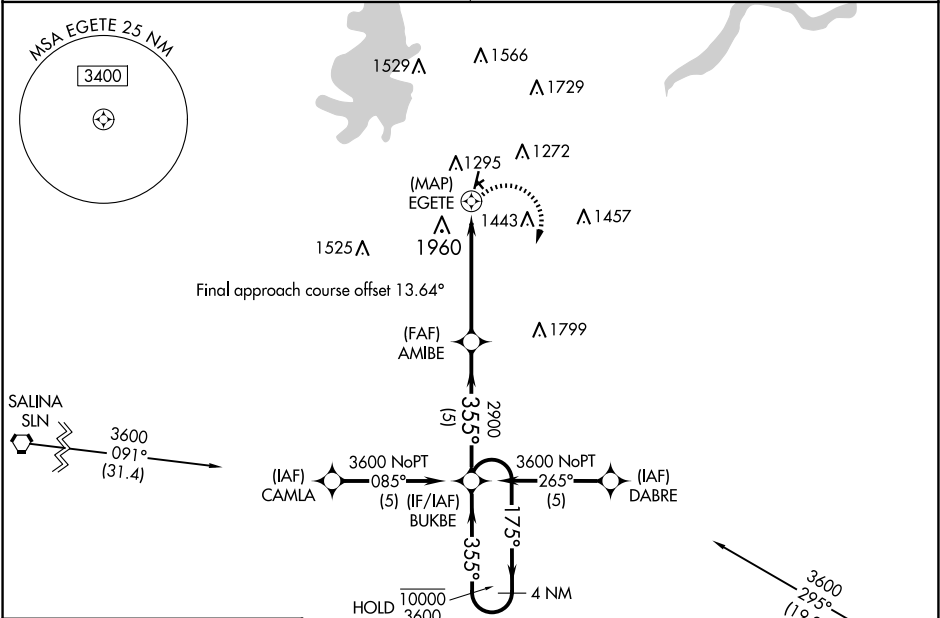
Circling Rwy 5, 23, 13, 31 NA. Circling NA west of Rwy 18-36.
Procedure NA at night. Rwy 36 helicopter visibility reduction below 1 SM NA. Use Marshall AAF, KS altimeter setting.

RNAV (GPS) RWY 36

FREEMAN FLD (3JC)

MARSHALL AAF GCA ★
121.25 269.05

UNICOM
122.8 (CTAF) 1



3600 BUKBE Visual Segment - Obstacles.				
4 NM Holding Pattern				
CATEGORY	A	B	C	D
LNAV MDA	2120-1¼ 1018 (1100-1¼)	2120-1½ 1018 (1100-1½)	NA	
CIRCLING	2120-1¼ 1018 (1100-1¼)	2120-1½ 1018 (1100-1½)	NA	