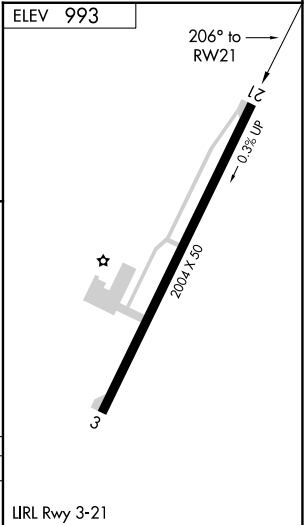
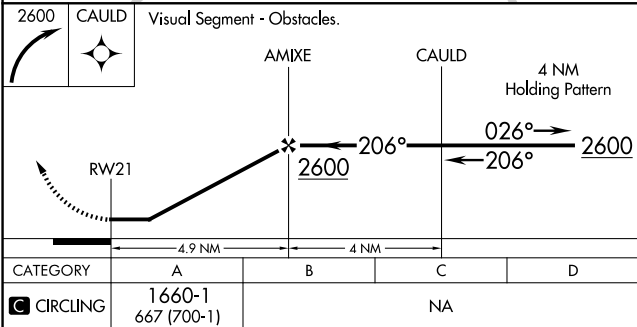
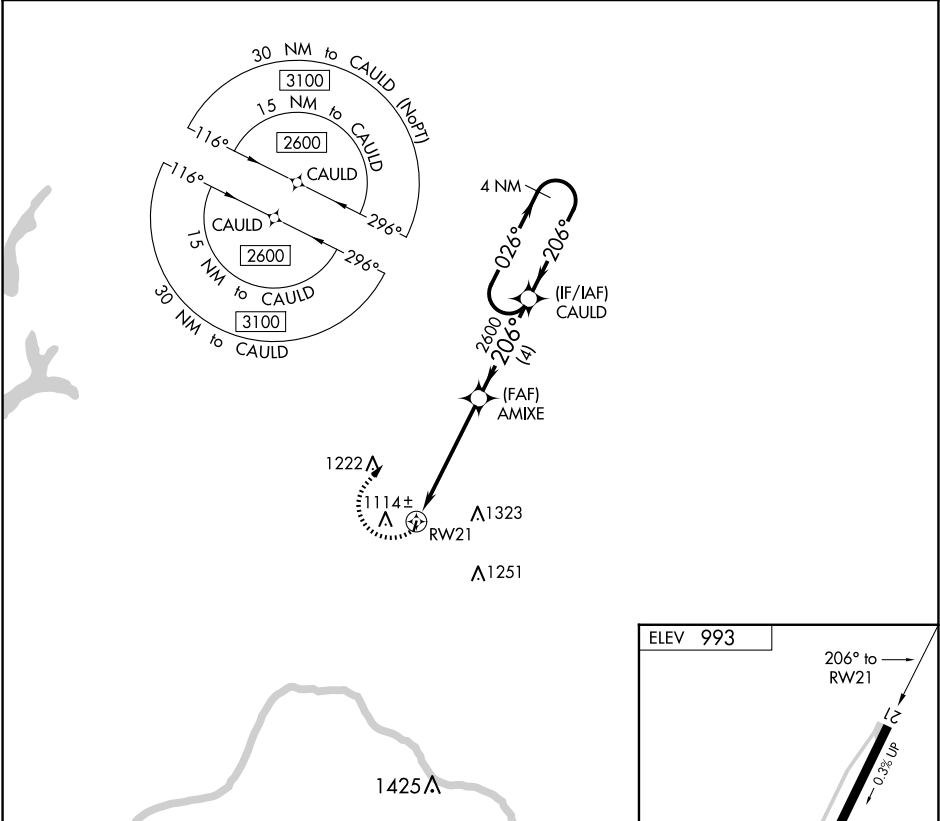


APP CRS	Rwy Idg	N/A
206°	TDZE	N/A
	Apt Elev	993

RNAV (GPS)-B  
EXCELSIOR SPRINGS MEML (3EX)

<div><div><div>▼</div><div>▲ NA</div></div><div>Use Charles B Wheeler Downtown altimeter setting. DME/DME RNP-0.3 NA. Procedure NA at night. Helicopter visibility reduction below 1 SM NA.</div></div>	MISSED APPROACH: Climbing right turn to 2600 direct CAULD and hold.
KANSAS CITY APP CON 118.4 307.35	UNICOM 122.7 (CTAF)



NC-3, 10 JUL 2025 to 07 AUG 2025

NC-3, 10 JUL 2025 to 07 AUG 2025