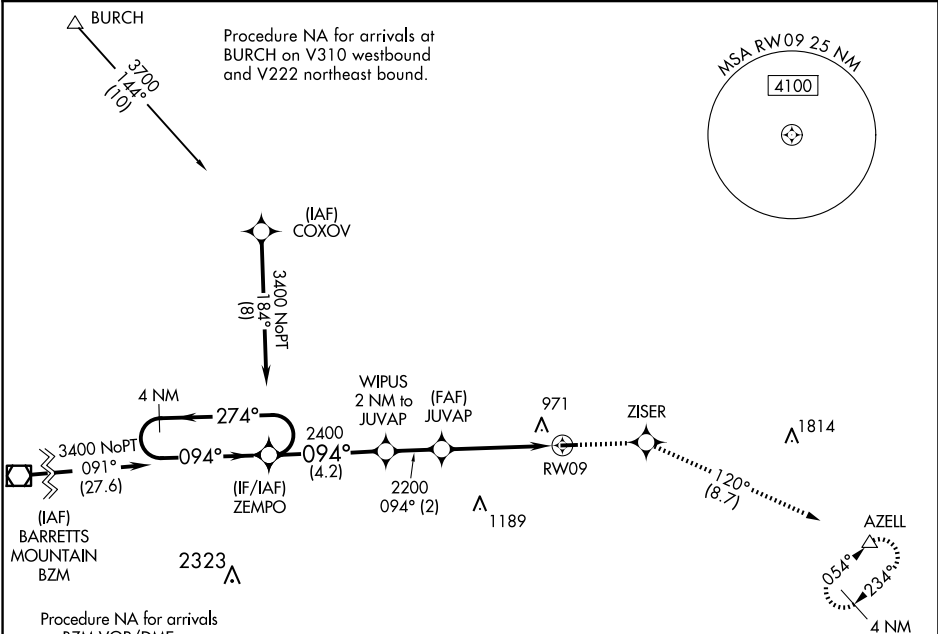


APP CRS	Rwy Idg	2943
094°	TDZE	818
	Apt Elev	818

RNAV (GPS) RWY 9
TWIN LAKES (8A7)

RNP APCH.		MISSED APPROACH: Climb to 3000 direct ZISER and on track 120° to AZELL and hold.
▼ ▲ NA	Use Davidson County Exec altimeter setting; when not received, use Smith Reynolds altimeter setting and increase all MDA 40 feet. Procedure NA at night. Rwy 9 helicopter visibility reduction below 1 SM NA.	
EXX AWOS-3 119.825	GREENSBORO APP CON 124.35 269.225	UNICOM 122.7 (CTAF)



on BZM VOR/DME
airway radials 356 CW 143.

4 NM Holding Pattern				ZEMPO	Visual Segment - Obstacles.			3000 ↑	ZISER ✦	tr 120°	AZELL △	ELEV 818	TDZE 818
3400 ← 274°		094° →		094°	WIPUS 2 NM to JUVAP	JUVAP	2400	2200	RW09		⤵	⊖ 1.5% UP →	27
		4.2 NM		2 NM		4.3 NM						094°	2943 X 50
CATEGORY	A		B		C		D						
LNAV MDA	1320-1		502 (600-1)		NA								
CIRCLING	1380-1 562 (600-1)		1400-1 582 (600-1)		NA								
												IIRL Rwy 9-27	

SE-2, 10 JUL 2025 to 07 AUG 2025

SE-2, 10 JUL 2025 to 07 AUG 2025