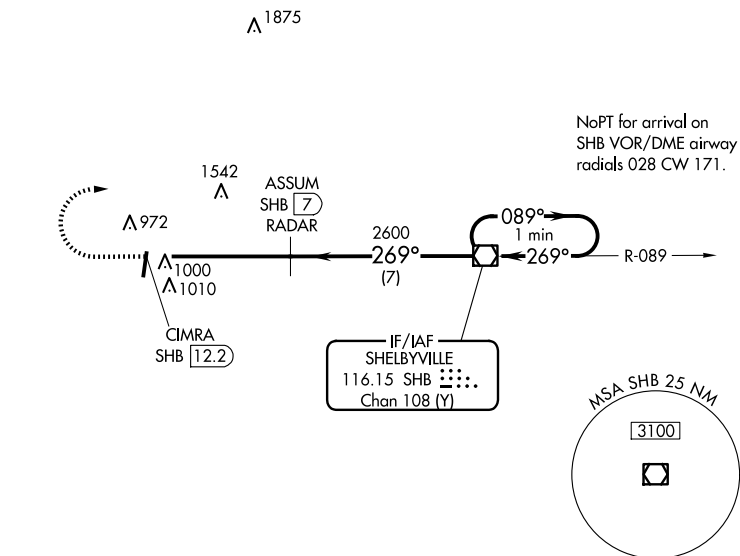


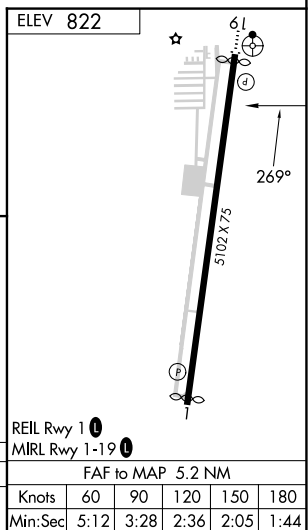
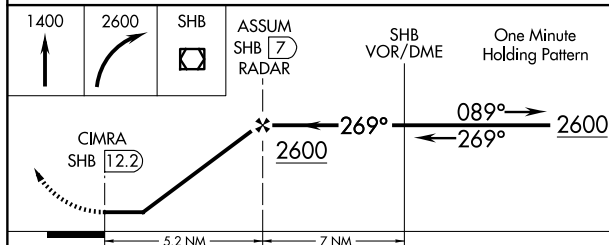
VOR-A
INDY SOUTH GREENWOOD (HFY)

MISSED APPROACH: Climb to 1400 then climbing right turn to 2600 direct SHB VOR/DME and hold.

AWOS-3P 118,525	INDIANAPOLIS APP CON 124.95 317.8	GCO 121.725	UNICOM 123.0 (CTAF) 0
---------------------------	---	-----------------------	---------------------------------



EC-2, 10 JUL 2025 to 07 AUG 2025



CATEGORY	A	B	C	D	FAF to MAP 5.2 NM					
CIRCLING	1360-1 538 (600-1)	1380-1 558 (600-1)	1380-1½ 558 (600-1½)	NA	Knots	60	90	120	150	180
					Min:Sec	5:12	3:28	2:36	2:05	1:44