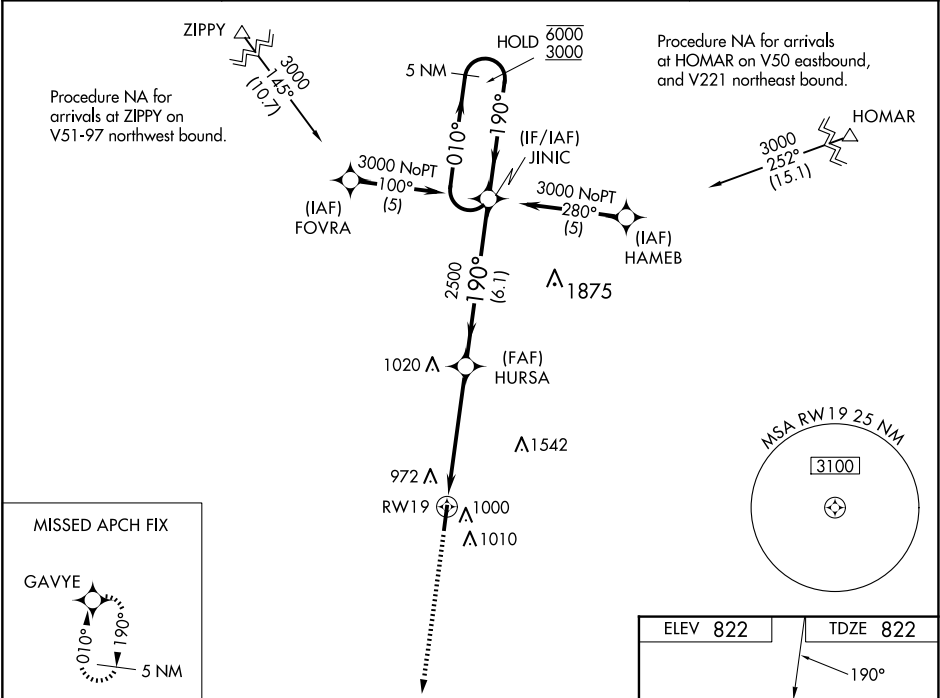


WAAS CH <b>53703</b> <b>W19A</b>	APP CRS <b>190°</b>	Rwy Idg TDZE Apt Elev	<b>5002</b> <b>822</b> <b>822</b>
--	------------------------	-----------------------------	---

RNAV (GPS) RWY 19

INDY SOUTH GREENWOOD (HF'Y)

RNP APCH - GPS.		ODALS	MISSED APPROACH: Climb to 3100 direct GAVYE and hold.
Rwy 19 helicopter visibility reduction below ¾ SM NA. For uncompensated Baro-VNAV systems, LNAV/VNAV NA below -16°C or above 54°C. Baro-VNAV and VDP NA when using Indianapolis Intl altimeter setting.			
AWOS-3P <b>118.525</b>	INDIANAPOLIS APP CON <b>124.95 317.8</b>	GCO <b>121.725</b>	UNICOM <b>123.0 (CTAF) 0</b>



MISSED APCH FIX		GAVYE		VGSi and RNAV glidepath not coincident (VGSi Angle 3.00/TCH 49).	
3100		GAVYE		5 NM Holding Pattern	
RW19		HURSA		JINIC	
1.4 NM to RW19		2500		010° → 6000 ← 190° 3000	
RW19		2500		GP 3.00° TCH 40	
1.4		3.7 NM		6.1 NM	
CATEGORY	A	B	C	D	
LPV DA	1130-1	308 (400-1)		NA	
LNAV/VNAV DA	1299-1¾	477 (500-1¾)		NA	
LNAV MDA	1300-1	478 (500-1)	1300-1¾ 478 (500-1¾)	NA	
CIRCLING	1360-1 538 (600-1)	1380-1 558 (600-1)	1380-1½ 558 (600-1½)	NA	

