

WAAS CH 97640 W01A	APP CRS 010°	Rwy Ldg TDZE Apt Elev	5000 822 822
--	------------------------	-----------------------------	---

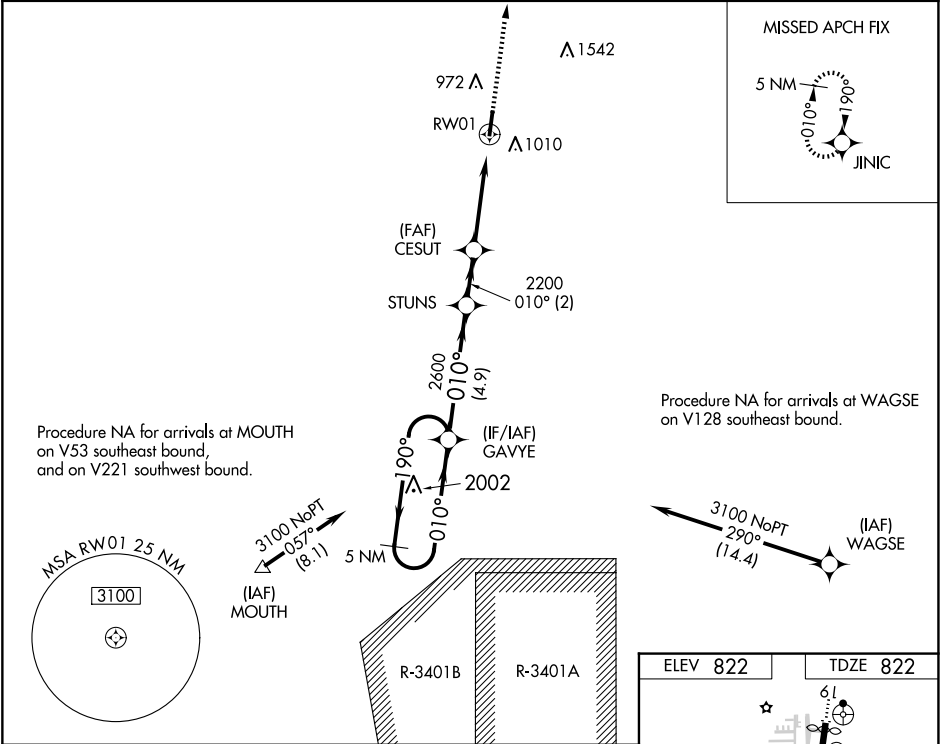
RNAV (GPS) RWY 1

INDY SOUTH GREENWOOD (HF'Y)

For uncompensated Baro-VNAV systems, LNAV/VNAV NA below -16°C (4°F) or above 54°C (130°F). Rwy 1 helicopter visibility reduction below ¾ SM NA. DME/DME RNP-0.3 NA.

MISSED APPROACH: Climb to 3000 direct JINIC and hold.

AWOS-3P 118.525	INDIANAPOLIS APP CON 124.95 317.8	GCO 121.725	UNICOM 123.0 (CTAF)
---------------------------	---	-----------------------	-------------------------------



5 NM Holding Pattern		VGSI and RNAV glidepath not coincident (VGSI Angle 3.00/TCH 39).		3000	JINIC
3100 ← 190°		STUNS		*1.3 NM to RW01	
010° →		CESUT		*RNAV only.	
GP 3.00°		2200		RW01	
TCH 39		2200		RW01	
		4.9 NM		2 NM	
				2.9 NM	
				1.3 NM	
CATEGORY	A	B	C	D	
LPV DA	1167-1½		345 (400-1½)		
LNAV/ VNAV DA	1152-1½		330 (400-1½)		
LNAV MDA	1280-1	458 (500-1)	1280-1¾	458 (500-1¾)	
CIRCLING	1320-1	1380-1	1380-1½	1900-3	
	498 (500-1)	558 (600-1)	558 (600-1½)	1078 (1100-3)	

