

LOC/DME I-AFP	APP CRS	Rwy Idg	5498
108.55	342°	TDZE	299
Chan 22(Y)		Apt Elev	300

ILS or LOC RWY 34

ANSON COUNTY/JEFF CLOUD FLD (A/P)

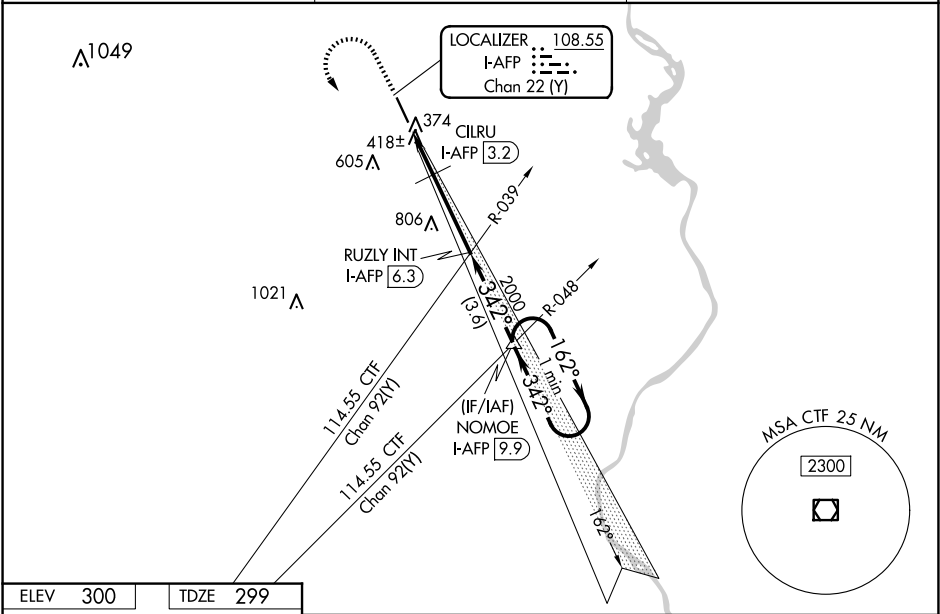
⚠

⚠

Rwy 34 helicopter visibility reduction below ¾ SM NA.

MISSED APPROACH: Climb to 1000 then climbing left turn to 3000 on heading 120° and on I-AFP S course (162°) to NOMOE INT/I-AFP 9.9 DME and hold.

AWOS-3 119.325	CHARLOTTE APP CON 120.05 307.8	UNICOM 122.8 (CTAF) 0
-------------------	-----------------------------------	--------------------------



ELEV 300

TDZE 299

1000

3000

hdg 120°

I-AFP S crs

NOMOE

91

34

5498 x 100

342°

MIRL Rwy 16-34 0

REIL Rwys 16 and 34 0

FAF to MAP 5.2 NM

Knots	60	90	120	150	180
Min:Sec	5:12	3:28	2:36	2:05	1:44

1000	3000	I-AFP S crs	NOMOE
↑	hdg 120°		△

RUZLY INT I-AFP 6.3

2000

342°

162°

3000

I-AFP 1.1

I-AFP 2.2

CILRU I-AFP 3.2

2000

940

1.1

1 NM

3.1 NM

3.6 NM

NOMOE I-AFP 9.9

One Minute Holding Pattern

GS 3.00°

TCH 42

CATEGORY	A	B	C	D
S-ILS 34	649-1 350 (400-1)			
S-LOC 34	940-1 641 (700-1)		940-1½ 641 (700-1½)	
CILRU FIX MINIMUMS				
S-LOC 34	820-1 521 (600-1)		820-1½ 521 (600-1½)	

WADESBORO, NORTH CAROLINA

ANSON COUNTY/JEFF CLOUD FLD (A/P)

Orig-D 03NOV22

35°01'N-80°05'W

ILS or LOC RWY 34