

WAAS
CH **90431**
W25A

APP CRS
248°

Rwy Idg
TDZE **681**
Apt Elev **692**

RNAV (GPS) RWY 25

RUSSELLVILLE-LOGAN COUNTY (4M7)

NA

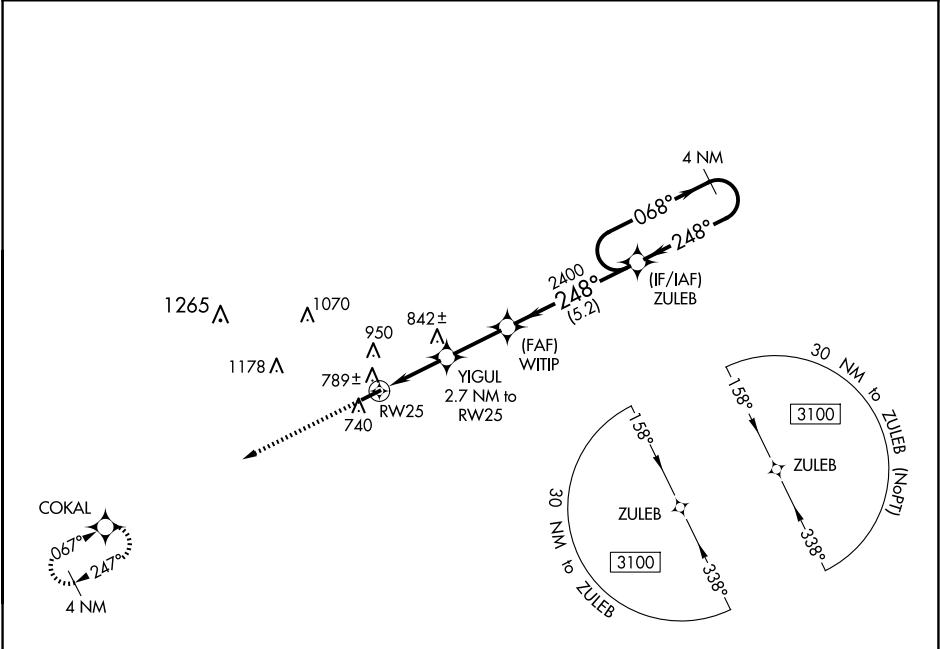
Baro-VNAV NA, DME/DME RNP-0.3 NA. Use Springfield altimeter setting. Rwy 25 helicopter visibility reduction below 1 SM NA. Straight-in Rwy 25 NA at night, Circling Rwy 25 NA at night.

MISSED APPROACH:
Climb to 3100 direct
COKAL and hold.

M91 AWOS-3
120.675

MEMPHIS CENTER
133.85 285.5

UNICOM
122.7 (CTAF) 0



ELEV 692

TDZE 681

3100

COKAL

VGSI and RNAV glidepath not coincident
(VGSI Angle 3.00/TCH 43).

*LNAV only

WITIP

YIGUL 2.7 NM to RW25

RW25

2400

2400

1600*

2.7 NM

2.4 NM

5.2 NM

4 NM Holding Pattern

ZULEB

068°

248°

3100

GP 3.10°

TCH 56

CATEGORY	A	B	C	D
LPV DA	985-1		304 (300-1)	
LNAV/VNAV DA	1001-1½		320 (400-1½)	
LNAV MDA	1080-1	399 (400-1)	1080-1½	399 (400-1½)
CIRCLING	1320-1	628 (700-1)	1320-1¾ 628 (700-1¾)	1520-2¾ 828 (900-2¾)