

WAAS CH 70434 W33A	APP CRS 334°	Rwy Idg TDZE Apt Elev	4200 1379 1379
--	------------------------	-----------------------------	---

RNAV (GPS) RWY 33

EL DORADO/CAPT JACK THOMAS MEML (EQA)

RNP APCH-GPS	
--------------	--

NA For uncompensated Baro-VNAV systems, LNAV/VNAV NA below -17°C or above 54°C. When local altimeter setting not received, use Colonel James Jabara altimeter setting and increase all DA 51 feet and all MDA 60 feet. Baro-VNAV and VDP NA when using Colonel James Jabara altimeter setting.

MISSED APPROACH: Climb to 3100 direct GOPHR and hold.

AWOS-3P

120.875

WICHITA APP CON

134.8 269.1

UNICOM

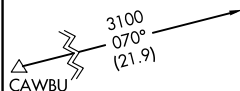
122.8 (CTAF) **L**

MISSED APCH FIX



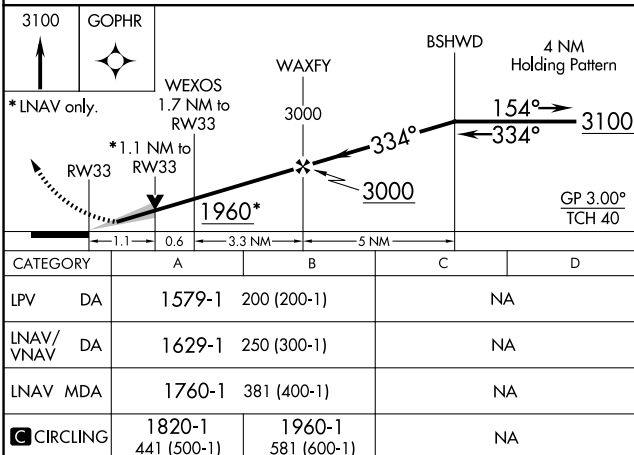
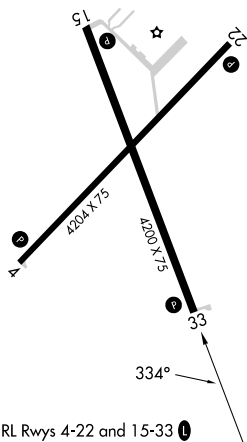
Procedure NA for arrivals at OBDW on V354 northbound and V350 eastbound.

Procedure NA for arrivals at CAWBU
on V73 northwest bound.



ELEV 1379

TDZE 1379



EL DORADO, KANSAS

Amdt 1B 06OCT22

EL DORADO/CAPT JACK THOMAS MEML (EQA)

37°46'N-96°49'W

RNAV (GPS) RWY 33