

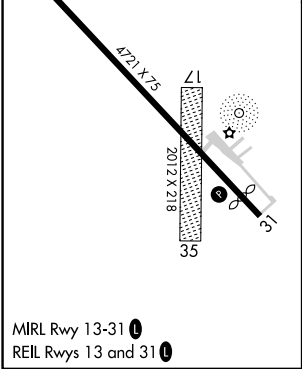
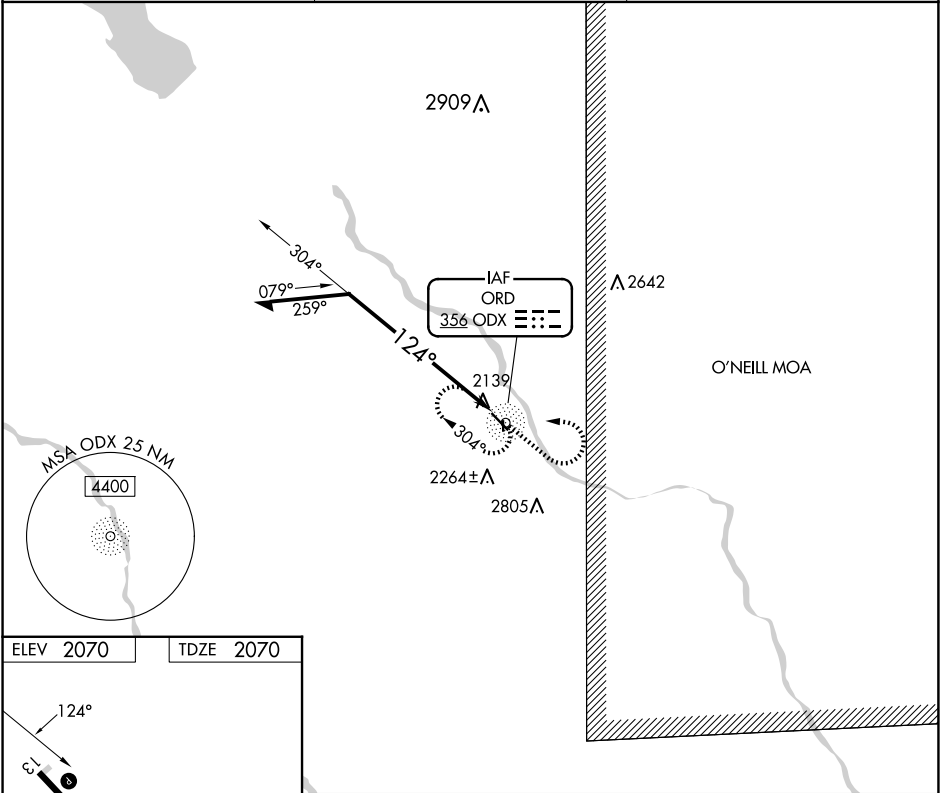
NDB ODX 356	APP CRS 124°	Rwy Idg TDZE Apt Elev	4721 2070 2070
----------------	-----------------	-----------------------------	----------------------

NDB RWY 13

EVELYN SHARP FLD (ODX)

RADAR required for procedure entry.		MISSED APPROACH: Climb to 4200 then left turn direct ODX NDB and hold.
	Circling NA to Rwy 17 and 35. Rwy 13 helicopter visibility reduction below 3/4 SM NA.	

ASOS 119.925	MINNEAPOLIS CENTER 119.4 278.8	UNICOM 122.8 (CTAF)
-----------------	-----------------------------------	------------------------



<div>Remain within 10 NM</div> <div><div>4200</div><div>304°</div><div>124°</div><div></div></div>		<div><div>4200</div><div></div></div> <div></div> <div><div>ODX</div><div></div></div>		
CATEGORY	A	B	C	D
S-13	2980-1¼	910 (1000-1¼)	NA	
CIRCLING	2980-1¼	910 (1000-1¼)	NA	

NC-2, 10 JUL 2025 to 07 AUG 2025

NC-2, 10 JUL 2025 to 07 AUG 2025