

APP CRS  
**093°**

Rwy Idg  
**7000**

TDZE  
**594**

Apt Elev  
**607**

RNAV (GPS) RWY 9

BENJAMIN TAISACAN MANGLONA INTL (GRO)(PGRO)

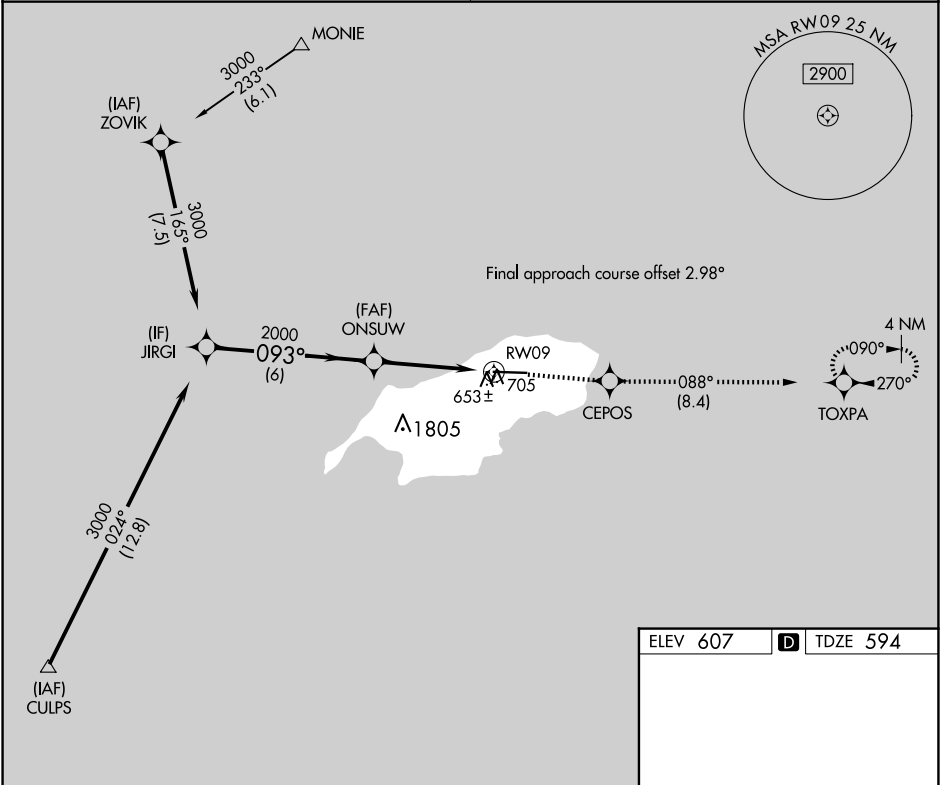
▼

▲

Circling NA south of Rwy 9-27. DME/DME RNP-0.3 NA. When local altimeter setting not received, use Andersen AFB altimeter setting and increase all MDA 320 feet, increase LNAV Cat C, D visibility 7/8 mile, Circling Cat C, D visibility 3/4 mile. VDP NA when using Andersen AFB altimeter setting.

MISSED APPROACH: Climb to 3000 direct CEPOS and on track 088° to TOXPA and hold.

GUAM CERAP <b>120.5 263.0</b>	CTAF <b>123.6</b>
----------------------------------	----------------------



ELEV 607 **D** TDZE 594

3000	CEPOS	tr 088°	TOXPA
------	-------	---------	-------

093°

7000 X 150

0.3% UP

27

CATEGORY	A	B	C	D
LNAV MDA	1000-1	406 (400-1)	1000-1 1/8	406 (400-1 1/8)
CIRCLING	1000-1 393 (400-1)	1060-1 453 (500-1)	1060-1 1/2 453 (500-1 1/2)	1160-2 553 (600-2)

REIL Rwy 9 **1**  
MIRL Rwy 9-27 **1**

