

WAAS CH 53530 W32A	APP CRS 317°	Rwy Idg 3300 TDZE 1082 Apt Elev 1083
--	------------------------	---

RNAV (GPS) RWY 32

LAC QUI PARLE COUNTY (DXX)

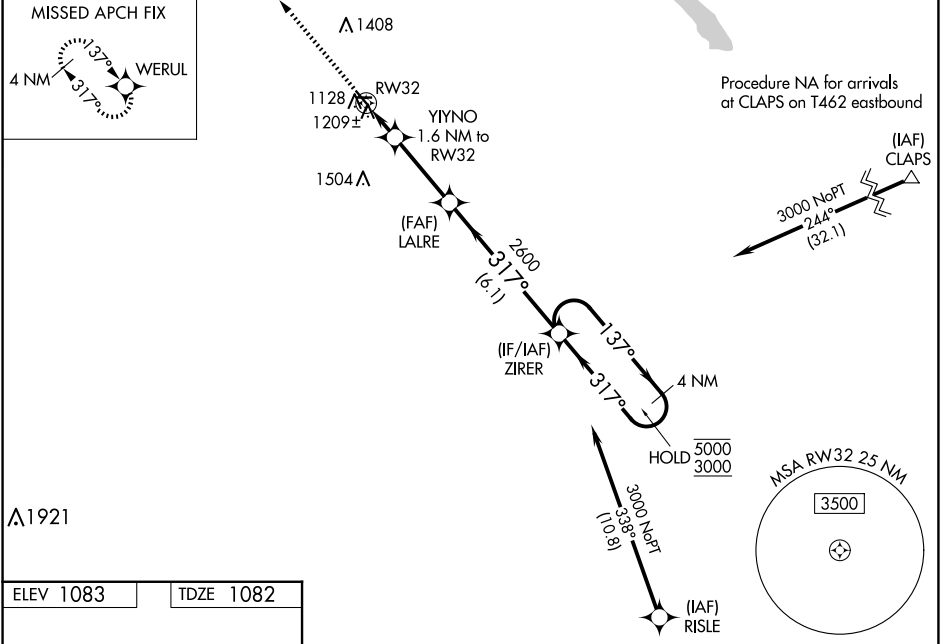
RNP APCH - GPS.

▼

Baro-VNAV NA when using Appleton Muni altimeter setting. For uncompensated Baro-VNAV systems, LNAV/VNAV NA below -17°C or above 54°C. Circling NA to Rwy's 9 and 27. When local altimeter setting not received, use Appleton Muni altimeter setting: increase LPV DA to 1329 feet; increase LNAV/VNAV DA to 1409 feet and visibility ¼ SM; increase all MDAs 60 feet and Circling Cat C visibility ½ SM.

MISSED APPROACH: Climb to 3000 direct WERUL and hold.

AWOS-3 118.975	MINNEAPOLIS CENTER 128.5 306.2	UNICOM 122.8 (CTAF) 0
--------------------------	--	---------------------------------



3000 WERUL VGSI and RNAV glidepath not coincident (VGSI Angle 3.00/TCH 23).				
<div><div><div><div>LAIRE</div><div>2600</div><div>317°</div><div>4 NM Holding Pattern</div><div>5000</div><div>3000</div><div>GP 3.00° TCH 45</div></div></div><div><div><div>YIYNO</div><div>1.6 NM to RW32</div><div>1620</div><div>1.6 NM</div><div>3 NM</div><div>6.1 NM</div></div></div></div>				
CATEGORY	A	B	C	D
LPV DA	1282-3 ⁴ / ₄ 200 (200-3 ⁴ / ₄)			NA
LNAV/VNAV DA	1363-7 ⁸ / ₈ 281 (300-7 ⁸ / ₈)			NA
LNAV MDA	1460-1	378 (400-1)	1460-1 ¹ / ₈ 378 (400-1 ¹ / ₈)	NA
CIRCLING	1640-1	557 (600-1)	1820-2 737 (800-2)	NA