

WAAS CH 63030 W14A	APP CRS 137°	Rwy Idg 3300 TDZE 1083 Apt Elev 1083
--	------------------------	---

RNAV (GPS) RWY 14
LAC QUI PARLE COUNTY (DXX)

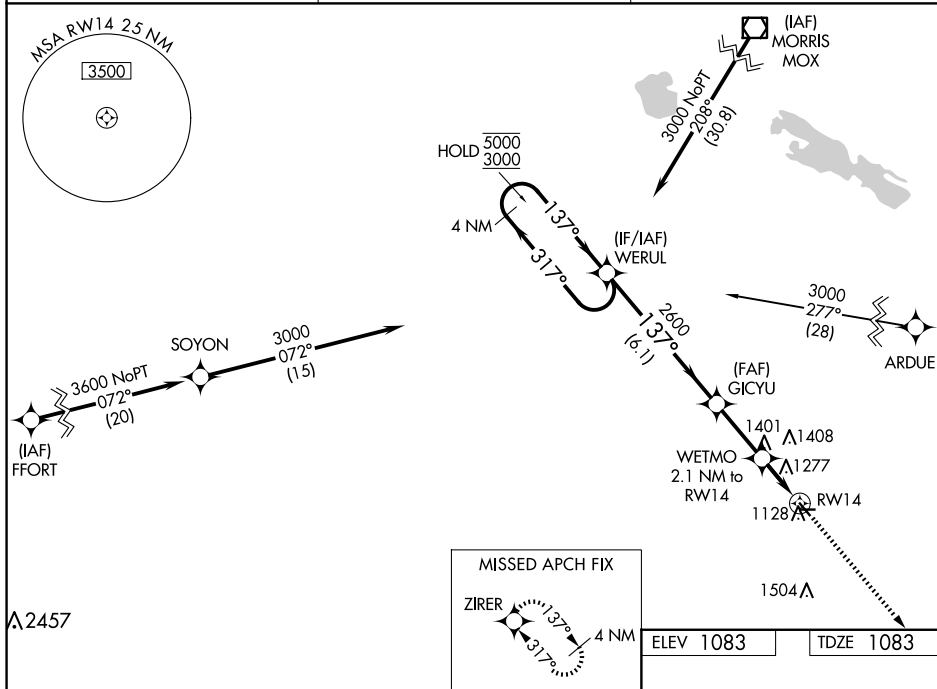
RNP APCH - GPS.


MISSED APPPROACH: Climb to 3000 direct ZIRER and hold.

T
A Circling NA to Rwy 9 and 27. For uncompensated Baro-VNAV systems, LNAV/VNAV NA below -17°C or above 54°C.

AWOS-3
118.975

MINNEAPOLIS CENTER
128.5 306.2

UNICOM
122.8 (CTAF) **L**

CATEGORY		A	B	C	D
LPV	DA	1283-1 200 (200-1)			NA
LNAV/ VNAV	DA	1572-1 $\frac{3}{8}$ 489 (500-1 $\frac{3}{8}$)			NA
LNAV	MDA	1540-1 457 (500-1)	1540-1 $\frac{3}{8}$ 457 (500-1 $\frac{3}{8}$)		NA
 CIRCLING		1640-1 557 (600-1)	1820-2 737 (800-2)		NA

REIL Rwy 14 and 32 **L**
MIRL Rwy 14-32 **L**

RNAV (GPS) RWY 14