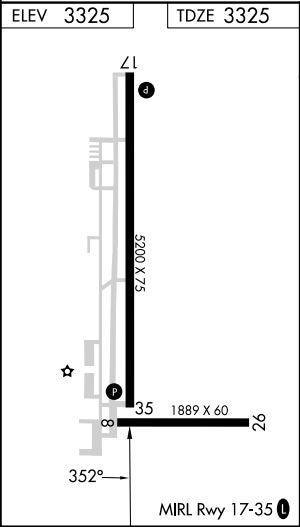
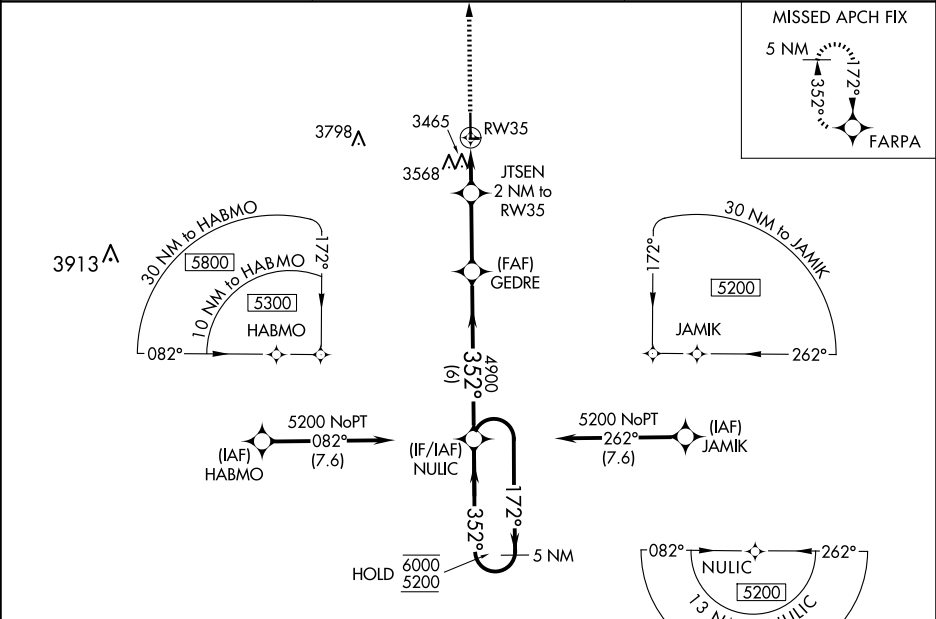


WAAS	Rwy Idg	5200
CH 50243	APP CRS	3325
W35A	TDZE	3325
	Apt Elev	3325

RNAV (GPS) RWY 35

STANTON COUNTY MUNI (JHN)

RNP APCH. Circling Rwy 8, 26 NA at night. Rwy 35 helicopter visibility reduction below ¾ SM NA. For uncompensated Baro-VNAV systems, LNAV/VNAV NA below -21°C or above 54°C.		MISSED APPROACH: Climb to 5200 direct FARPA and hold.
AWOS-3PT 124.175	KANSAS CITY CENTER 125.2 285.425	UNICOM 122.8 (CTAF) 0



5200 FARPA		JTSEN 2 NM to RW35		NULIC 5 NM Holding Pattern	
*LNAV only		*1.3 NM to RW35		GP 3.00° TCH 40	
RW35		GEDRE 4900		NULIC 4000*	
1.3 NM		0.7		2.8 NM	
CATEGORY		A		B	
LPV DA		3575-1		250 (300-1)	
LNAV/VNAV DA		3808-1 3/8		483 (500-1 3/8)	
LNAV MDA		3780-1 455 (500-1)		3780-1 3/8 455 (500-1 3/8)	
CIRCLING		3880-1 555 (600-1)		4040-2 715 (800-2) 4040-2 1/4 715 (800-2 1/4)	