

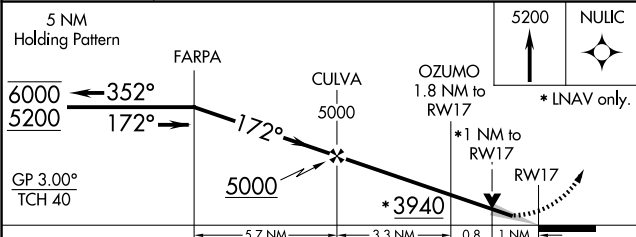
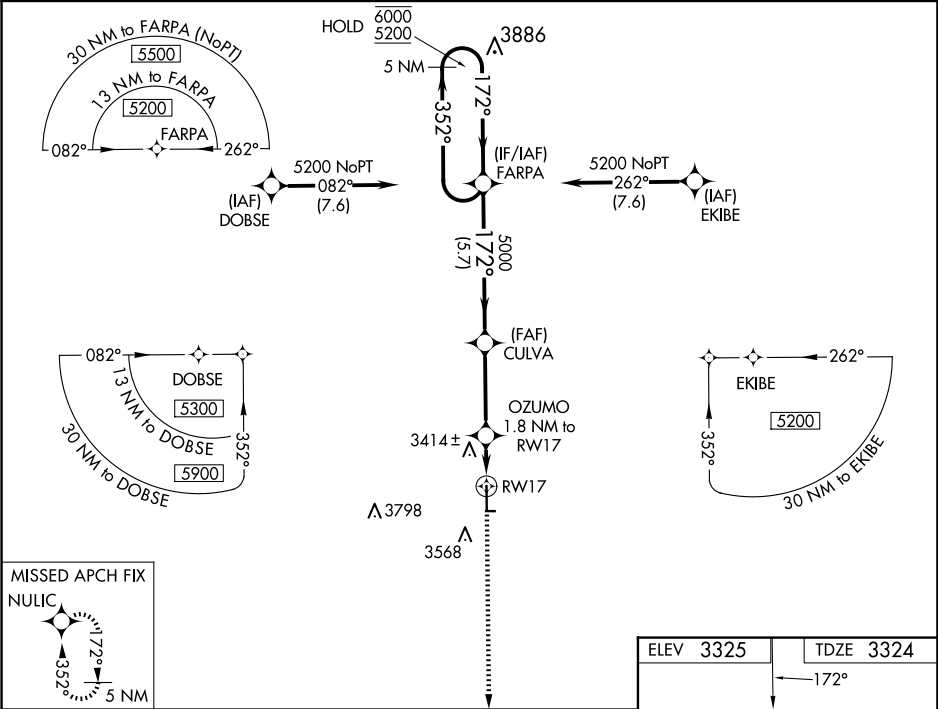
WAAS CH 90243 W17A	APP CRS 172°	Rwy Idg TDZE 3324 Apt Elev 3325
--	------------------------	---

RNAV (GPS) RWY 17

STANTON COUNTY MUNI (JHN)

RNP APCH.	<div><div>▼</div><div>⚠</div></div> <div>Circling Rwy 8, 26 NA at night. For uncompensated Baro-VNAV systems, LNAV/VNAV NA below -21°C or above 54°C.</div>	MISSED APPROACH: Climb to 5200 direct NULIC and hold.
-----------	---	---

AWOS-3PT 124.175	KANSAS CITY CENTER 125.2 285.425	UNICOM 122.8 (CTAF) 0
----------------------------	--	---------------------------------



CATEGORY	A	B	C	D
LPV DA		3524-1	200 (200-1)	
LNAV/VNAV DA		3574-1	250 (300-1)	
LNAV MDA		3680-1	356 (400-1)	
<div>CIRCLING</div>	3880-1	555 (600-1)	4040-2 715 (800-2)	4040-2¼ 715 (800-2¼)

