

WAAS CH 49224 W14A	APP CRS 136°	Rwy Idg 5322 TDZE 5736 Apt Elev 5737
--	------------------------	---

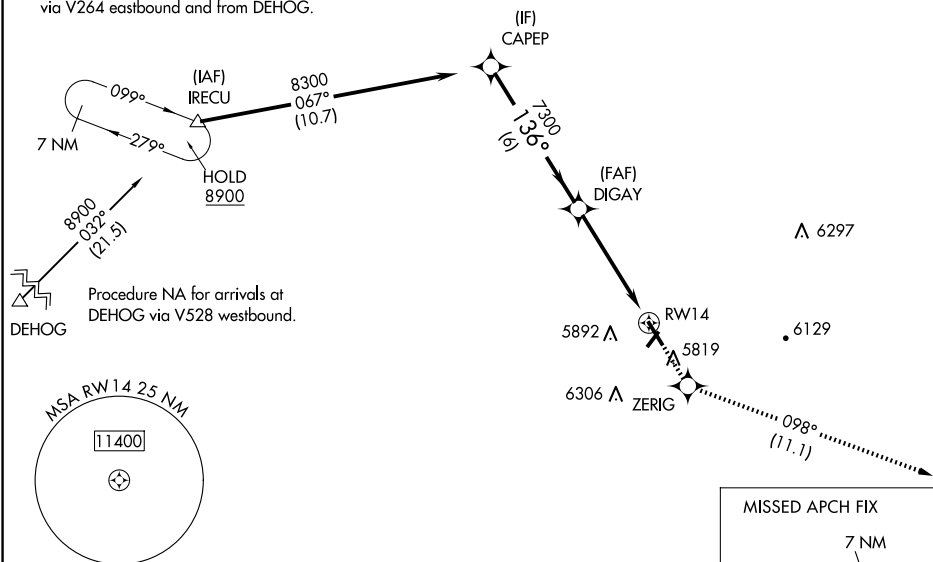
RNAV (GPS) RWY 14
ST JOHNS INDUSTRIAL AIR PARK (SJN)

- T** Night landing Rwy 3, 32 NA. When local altimeter setting not received, use Show Low altimeter setting and increase all MDA 180 feet. DME/DME RNP-0.3 NA. Helicopter visibility reduction below $\frac{3}{4}$ SM NA. VDP NA with Show Low altimeter setting.

MISSED APPROACH: Climb to 9000 direct ZERIG and on track 098° to SJN VORTAC and hold, continue climb-in-hold to 9000.

ASOS 134.225	ALBUQUERQUE CENTER 124.325 288.25	UNICOM 122.8 (CTAF) ①
------------------------	---	---------------------------------

Holding not required for arrivals at IRECU via V264 eastbound and from DEHOG.



ELEV 5737

TDZE 5736

136° to RW14

3222 X 75

3000 X 60

5790 ☆

CATEGORY	A	B	C	D
LP MDA	6140-1	404 (500-1)	NA	
LNAV MDA	6140-1	404 (500-1)	NA	
CIRCLING	6260-1 523 (600-1)	6280-1 543 (600-1)	NA	