

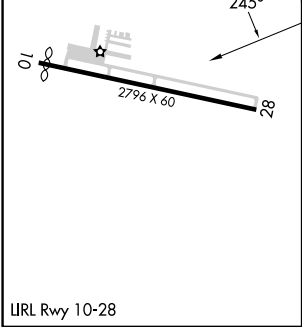
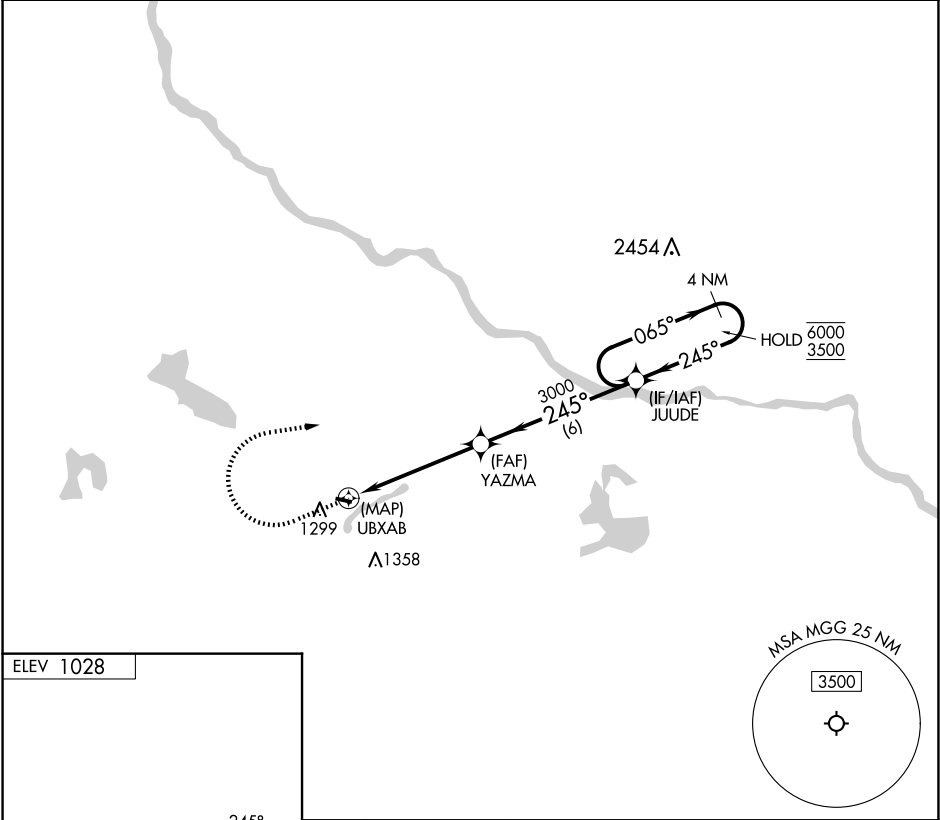
APP CRS	Rwy Idg	N/A
245°	TDZE	N/A
	Apt Elev	1028

RNAV (GPS)-A

MAPLE LAKE MUNI-BILL MAVENCAMP SR FLD (MGG)

RNP APCH - GPS.	MISSED APPROACH: Climb to 2000 then climbing right turn to 3500 direct JUUDE and hold.
⚠ Procedure NA at night. Rwy 10 and 28 helicopter visibility reduction below 1 SM NA. When local altimeter setting not received, use Buffalo altimeter setting and increase all MDAs 40 feet.	

AWOS-3 128.325	MINNEAPOLIS APP CON 126.5 335.65	UNICOM 122.8 (CTAF)
-------------------	-------------------------------------	------------------------



2000	3500	JUUDE	JUUDE	4 NM Holding Pattern
↑	↻	✧	✧	065° → 6000 ← 245° 3500
UBAB	YAZMA	JUUDE		
5.1 NM	6 NM			
CATEGORY	A	B	C	D
CIRCLING	1 660-1	632 (700-1)	1720-2 692 (700-2)	NA

NC-1, 10 JUL 2025 to 07 AUG 2025

NC-1, 10 JUL 2025 to 07 AUG 2025