
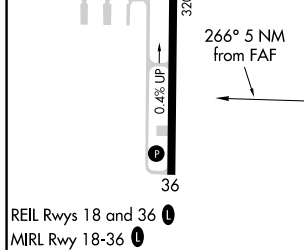
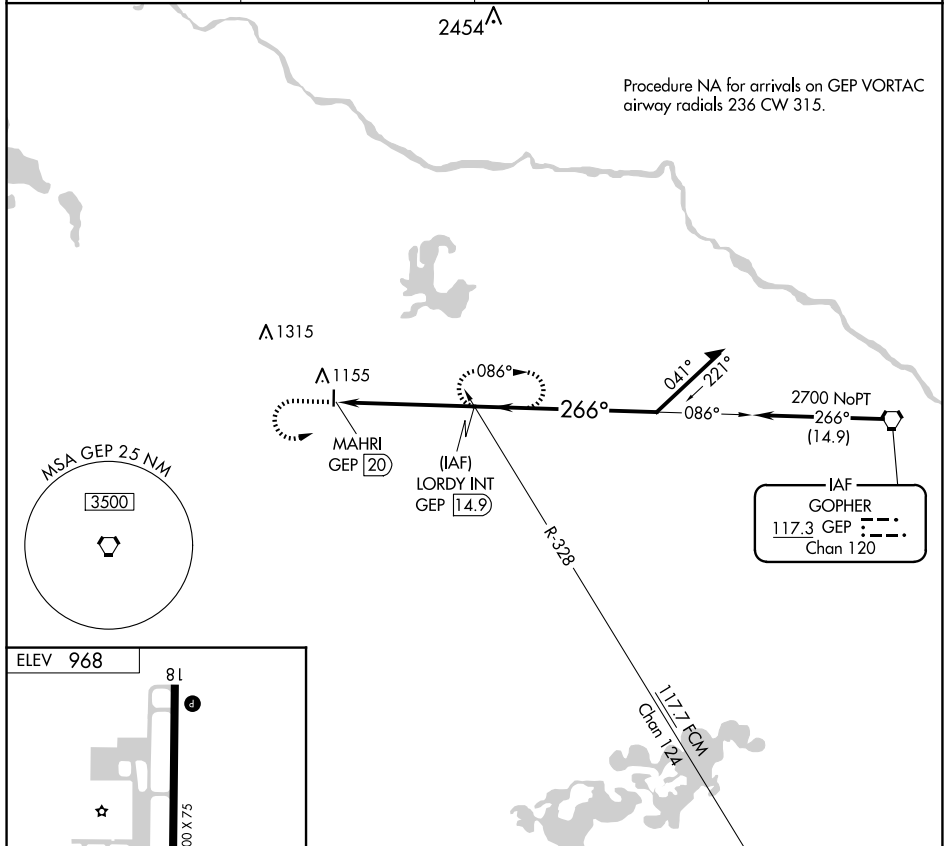


21336

VORTAC GEP <b>117.3</b> Chan <b>120</b>	APP CRS <b>266°</b>	Rwy Idg TDZE Apt Elev	<b>N/A</b> <b>N/A</b> <b>968</b>
---	------------------------	-----------------------------	--

VOR-A  
BUFFALO MUNI (CFE)

	When local altimeter setting not received, use Maple Lake altimeter setting. When VGSI inoperative, procedure NA at night.		MISSED APPROACH: Climb to 2200 then climbing left turn to 3600 via GEP VORTAC R-266 to LORDY INT/GEP VORTAC 14.9 DME and hold.	
	AWOS-3PT <b>120.45</b>	MINNEAPOLIS APP CON <b>126.5 335.65</b>	GCO <b>121.725</b>	UNICOM <b>122.8 (CTAF) 0</b>



CATEGORY	A	B	C	D
C CIRCLING	1580-1	612 (700-1)	1580-1 $\frac{3}{4}$ 612 (700-1 $\frac{3}{4}$ )	NA

BUFFALO, MINNESOTA  
Orig-A 23APR20

BUFFALO MUNI (CFE)  
VOR-A

45°10'N-93°51'W

NC-1, 10 JUL 2025 to 07 AUG 2025

NC-1 10 JUL 2025 to 07 AUG 2025