

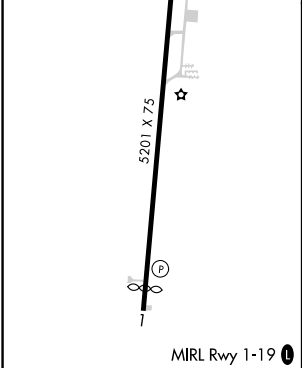
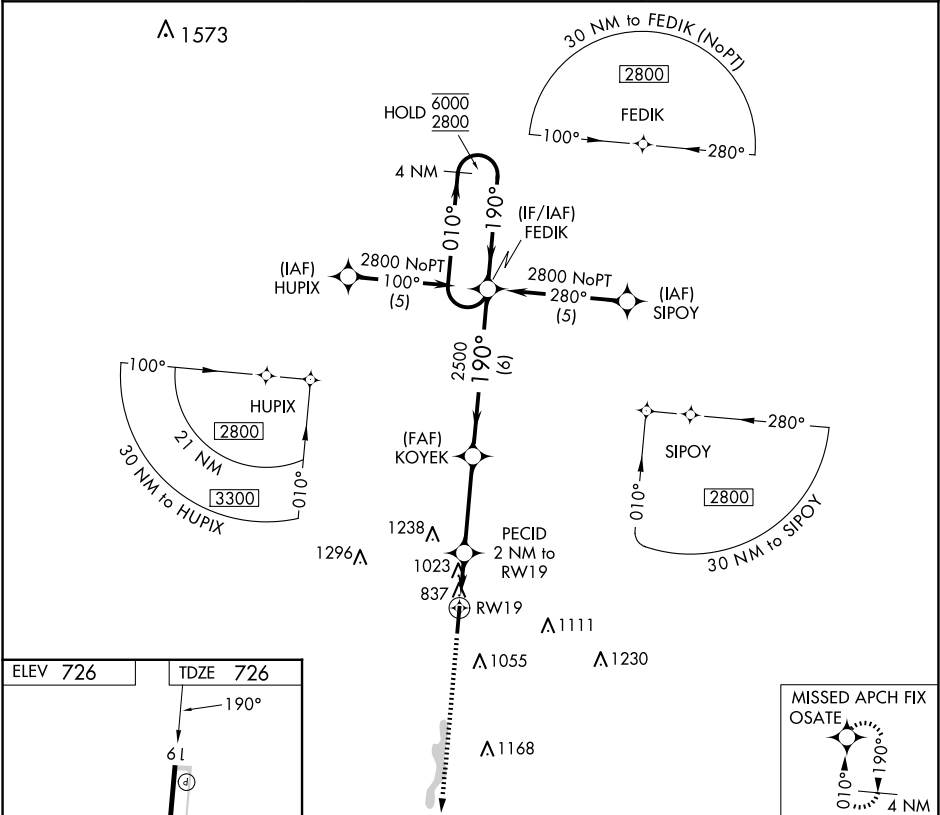


APP CRS	Rwy Idg	5201
190°	TDZE	726
	Apt Elev	726

RNAV (GPS) RWY 19

JAMES A RHODES (JRO)

RNP APCH - GPS.		MISSED APPROACH: Climb to 2800 direct OSATE and hold.
	Procedure NA at night. Rwy 19 helicopter visibility reduction below 1 SM NA.	
AWOS-3PT 118.825	HUNTINGTON APP CON 128.4 270.1	UNICOM 122.7 (CTAF) 



2800	OSATE	VGSI and descent angles not coincident (VGSI Angle 4.00/TCH 45).		FEDIK	4 NM	Holding Pattern
RW19		PECID 2 NM to RW19	1460	2500	010°	6000
RW19		3.32° TCH 40	190°	190°	2800	
RW19		2 NM	3.5 NM	6 NM		
CATEGORY	A	B	C	D		
LNAV MDA	1280-1	554 (600-1)	1280-1½	554 (600-1½)		
CIRCLING	1340-1 614 (700-1)	1480-1 754 (800-1)	1680-3	954 (1000-3)		

EC-2, 10 JUL 2025 to 07 AUG 2025

EC-2, 10 JUL 2025 to 07 AUG 2025