

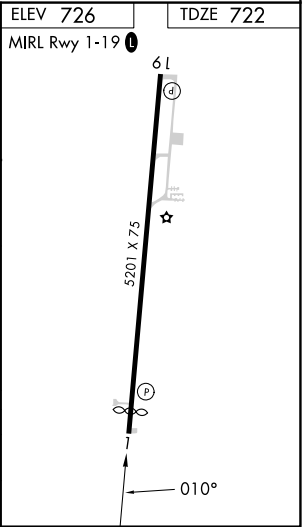
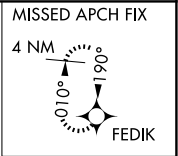
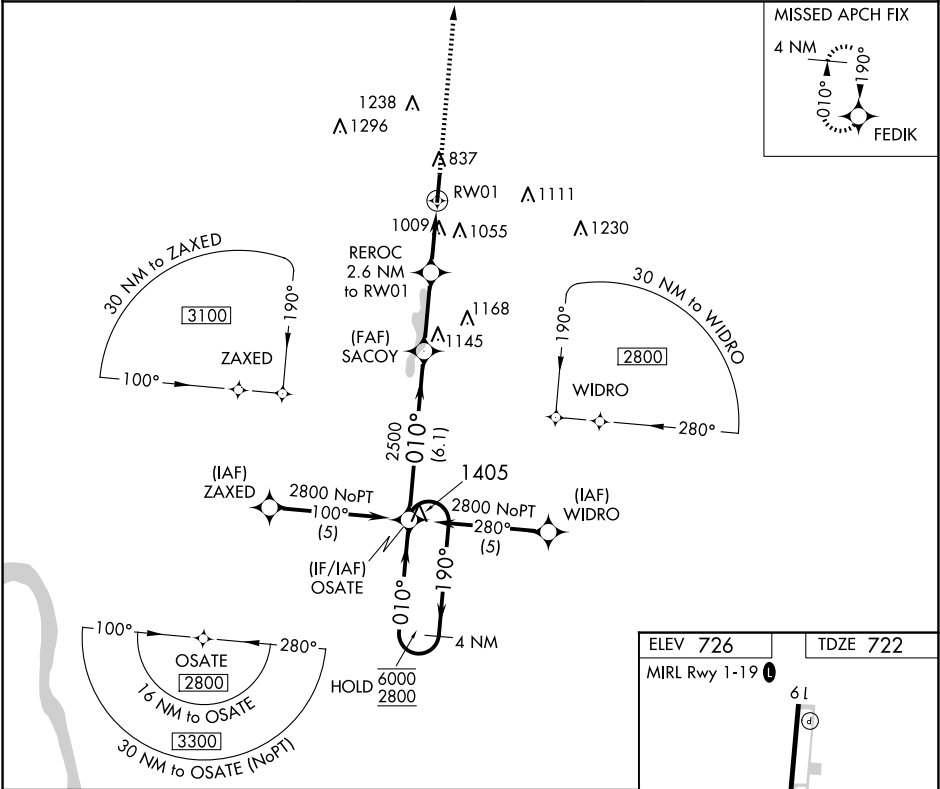
APP CRS	Rwy Idg	4870
010°	TDZE	722
	Apt Elev	726

RNAV (GPS) RWY 1

JAMES A RHODES (JRO)

RNP APCH - GPS.	MISSED APPROACH: Climb to 2800 direct FEDIK and hold.
Procedure NA at night. Rwy 1 helicopter visibility reduction below 1 SM NA.	

AWOS-3PT 118.825	HUNTINGTON APP CON 128.4 270.1	UNICOM 122.7(CTAF) 0
---------------------	-----------------------------------	-------------------------



4 NM Holding Pattern	OSATE	SACOEY	REROC 2.6 NM to RW01	RW01
6000 2800	190° 010°	2500	1540	
6.1 NM 2.8 NM 2.6 NM				
CATEGORY	A	B	C	D
RNAV MDA	1300-1	578 (600-1)	1300-1½	578 (600-1½)
CIRCLING	1340-1 614 (700-1)	1480-1 754 (800-1)	1680-3	954 (1000-3)

EC-2, 10 JUL 2025 to 07 AUG 2025

EC-2, 10 JUL 2025 to 07 AUG 2025